



10th UIC World
Security Congress
Lisbon 2014



UITP Security Commission

URBAN TRANSPORT SECURITY



INTERNATIONAL UNION
OF RAILWAYS



COMBOIOS DE PORTUGAL

Antonio VALENTE, Metro Lisboa



What is UITP?



ADVANCING
PUBLIC
TRANSPORT

A non-profit international association for the public transport sector.

1300 member companies

- Operators
- Authorities
- Policy decision-makers
- Research institutes
- The public transport supply and service industry
- **14,000** contacts
- **92** countries
- www.uitp.org





UITP Security Commission

- A **platform for exchange** and discussion for UITP members on PT security issues
- Steers UITP's **positions on PT security**
- Seeks to **promote the importance of security** for PT

Scope:

- Daily operational security (graffiti, aggression...)
- Terrorism





UITP Security Commission (2)

- 36 members, 21 countries
 - Europe, the Americas, Asia, Middle East
- Collaboration
 - UIC, COLPOFER, APTA, CUTA, EU institutions...
 - Security projects (Securestation, Secur-ed, Seconomics, etc.)





Security Commission Matrix of Threats

Annual survey of members reveals the current priority topics:



AVERAGE

ALL MODES

3,00	Property damage, degradation, destruction (criminal damage)	Offences against property (material & immaterial)
2,87	Theft without assault (Theft from person)	Offences against persons
2,83	Behavioural offence Public Disorder offences	Other offences related to traffics and behaviour
2,52	Assault with neither physical violence nor theft	Offences against persons
2,30	Trespassing	Other offences related to traffics and behaviour



Top 5 security issues

10th UIC World
Security Congress
Lisbon 2017





Focus on Graffiti

- Increase in international « graffiti tourism »
- SecCom informally exchanges information on attacks from international groups
- EU DG MOVE now funding 3 workshops to design an EU database & formalise exchange
- Collecting & sharing data (tags, signatures, modus operandi etc) of international graffiti





TOGETHER ON THE SAME JOURNEY



Lisbon Metro Security

Lisbon, 26-28 November 2014





Lisbon Metropolitan Area

	Lisbon Metropolitan Area	Lisbon city
Area (km ²)	2 870	84
Population	2 815 851	545 245
Jobs	1 060 300	489 400
Trips / day	1,9	2,2
Motorization (vehicles per 1,000 inhabitants)	471	672

Source: I.N.E.





Mission

Provide a customer-oriented public passenger transport service, through the metro, promoting safely sustainable mobility.





Lisbon Metro in 2013

4 lines

43.2 km

112 Three car units

55 stations

1,525 staff

21,5 x 10⁶ car x km

2 752 x 10⁶ seat x km

135 x 10⁶ passengers

656 x 10⁶ passengers x km







Lisbon Metro network

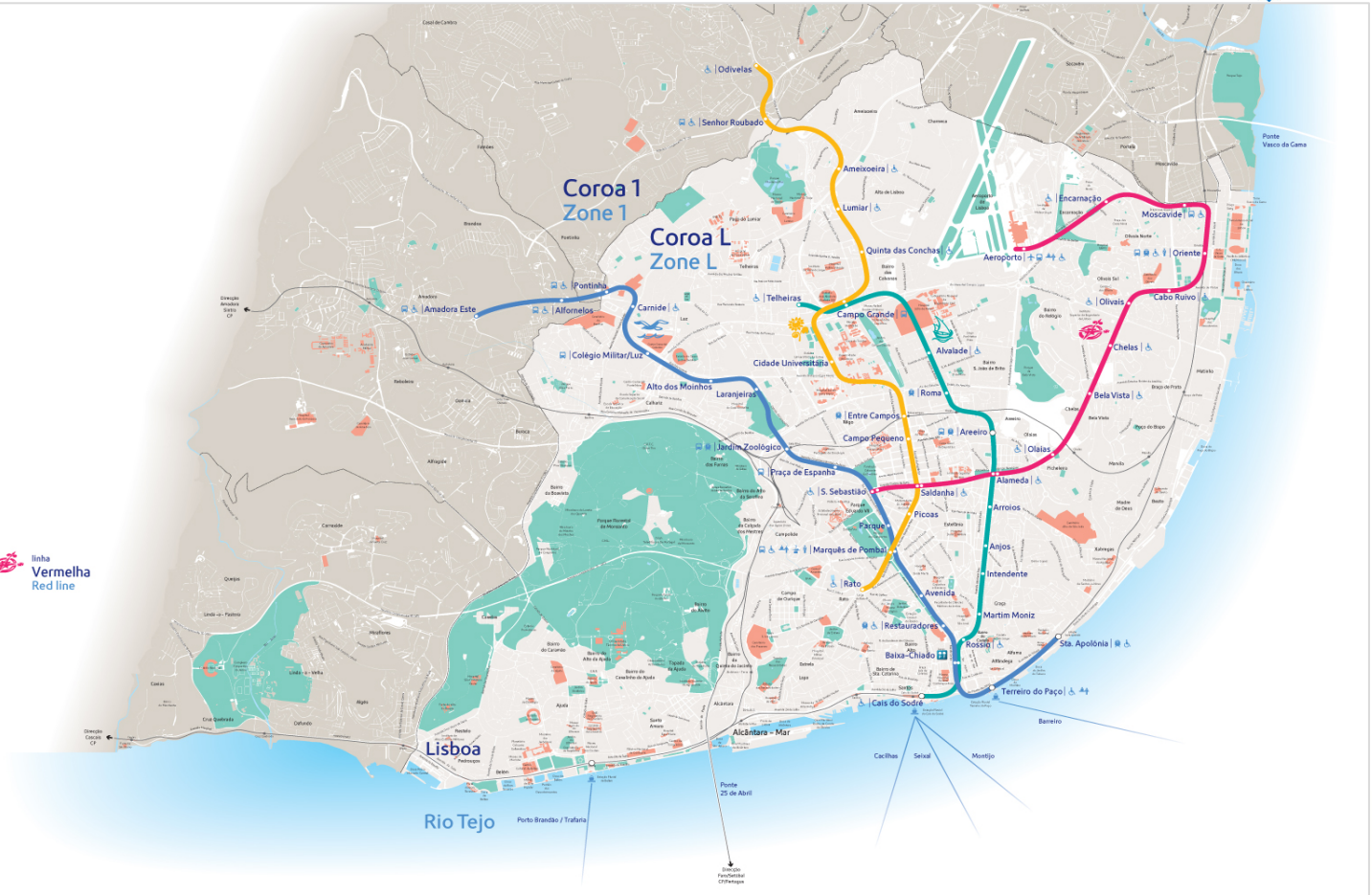
10th UIC World Security Congress
Lisbon 2014



Mapa da cidade

-  Aeroporto
Airport
-  Autocarro suburbano
Suburban bus
-  Barco
Boat
-  Comboio
Railways
-  Gabinete do Cliente
Customer Service Office
-  Mobilidade reduzida
Step free
-  Perdidos e achados
Lost property
-  Policia
Police

-  linha Azul
Blue line
-  linha Amarela
Yellow line
-  linha Verde
Green line
-  linha Vermelha
Red line

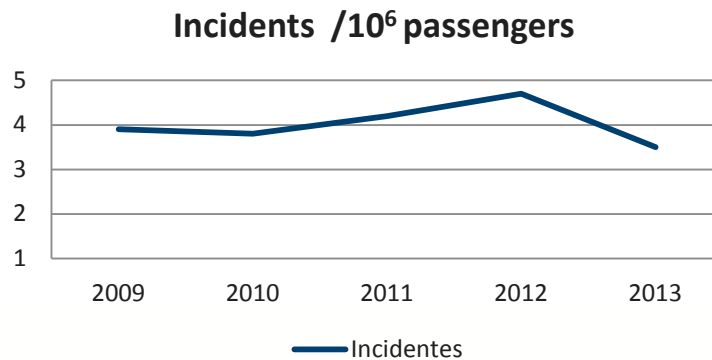


Lisbon, 26-28 November 2014

Lisbon Metro network Security



2013 Indicators	1º Quarter	2º Quarter	3º Quarter	4º Quarter	Annual
Incidents with passengers / 10 ⁶ pass	2,83	3,05	4,50	3,68	3,50
Vandalisms in Rolling Stock / 10 ⁶ pass	0,71	0,54	0,71	0,47	0,61
Vandalisms in stations / 10 ⁶ pass	2,77	1,84	1,73	1,82	2,04





MAIN THREATS

➤ **Operating**

- Derailment, crash, collision,
- Fire,
- Electrocution.

➤ **natural**

- Earthquakes; tsunamis; floods

➤ **caused**

- Terrorist incidents,
- fires
- Burglaries, robberies, assaults
- Intrusion, vandalism, Graffiti, anti-social behaviour



Lisbon Metro network Security

10th UIC World
Security Congress
Lisbon 2014



Security Policy

- **Basic pillars of security:**
 - The Operational Command Central
 - The action of the Company Employees
 - Private security guards
 - PSP: The DSTP/Division to Support the Public Transport
- **Partnership with all entities that are responsible, in society, to defend and protect the citizens;**
- **Making Safety a common task to everyone and not only the obligation of some.**





OCC - Operational Command Central

- Coordinates and control the operation of the transport service,
- Command and supervises the technical facilities (power, signaling, QGBT, ventilation, pumping, CCTV, etc..).
- Coordinates emergency:
 - Makes contact with external entities;
 - Coordinates the emergency intervention teams of the company;
 - Apply emergency procedures;
 - Restores normal activity.



Lisbon Metro network Security

10th UIC World
Security Congress
Lisbon 2014



Employees

- Top of the safety and security pyramid;
- Technical and safety training;
 - Good general knowledge,
 - How to do it,
 - How to implement regulations,
- Each employee is a security guard at his job;
- Emergency drills.



Lisbon, :

Lisbon Metro network Security

10th UIC World
Security Congress
Lisbon 2014



Security tasks

- Metro employee / security guard in stations and in trains (visibility);
- Security guards at the OCC (security area supporting the resolution of emergencies, CCTV);
- Night operational employees - support night maintenance and cleaning activities;
- Night security guard of rolling stock in the depots;
- Night security inspections of sensitive spots with private guards (in cars with dogs).



Lisbon Metro network Security

10th UIC World
Security Congress
Lisbon 2014



PSP / DSTP

- Maintenance of public order in the stations;
- Actions against pickpockets with agents in OCC and ununiformed brigades on the line;
- Uniformed agents for dissuasion of Street Vendors in certain stations;
- PSP support ticket inspections actions and the opening of some stations over the weekend;
- Night actions to surprise groups of grafiters and copper thieves;





Intrusion / vandalism on the facilities

- Vandalism / graffiti.
- Theft of copper and other metals.
- Other intrusions.

Increase of aggression level of the intruders,

Excellent technical resources available to prepare graffiti,

High preparation of the intrusions.



Lisbon Metro network Security



preparation of the intrusions



Lisbon Metro network Security



Terrorist attacks on public transport

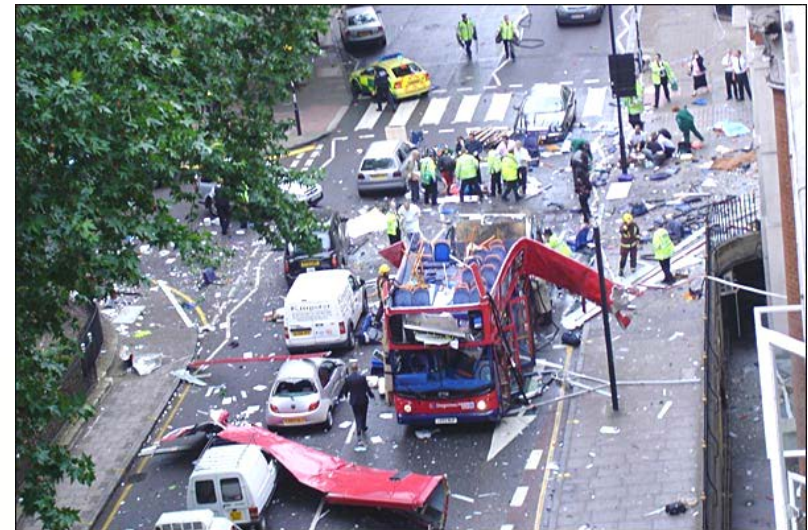
Moscow, Russia



Israel



London, GB



Madrid, Spain





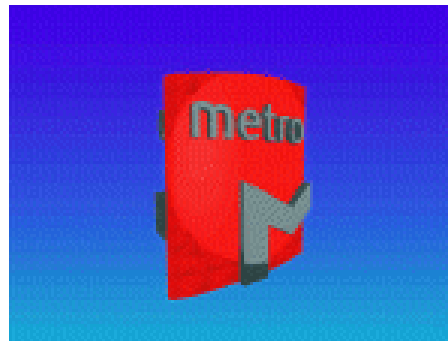
How we face this threat:

- Recognition that we could be a terrorist target;
- The question is not whether there will be a terrorist attack, but rather when it will happen;
- The preparation involves not only how to oppose or counteract an attack, but also how to deal with its consequences.



Lisbon Metro network Security

10th UIC World
Security Congress
Lisbon 2014



Thank you!
(Obrigado!)

Antonio.valente@metrolisboa.pt



Lisbon, 26-28 November 2014