

The UIC International Sustainable Railway Awards (ISRA) recognise and honour key stakeholders in the railway sector who are leading innovation in social ('people'), environmental ('planet'), and economic ('prosperity') sustainability.

The awards showcase transformative work from stations to trains, from economic resilience to emergency pandemic response, from social outreach to supporting the local environment.

The gala ceremony for The UIC International Sustainable Railway Awards took place on 1 June 2022 at Radisson Collection Hotel, Berlin, Germany.



presents



THE UIC INTERNATIONAL
SUSTAINABLE RAILWAY
AWARDS 2022

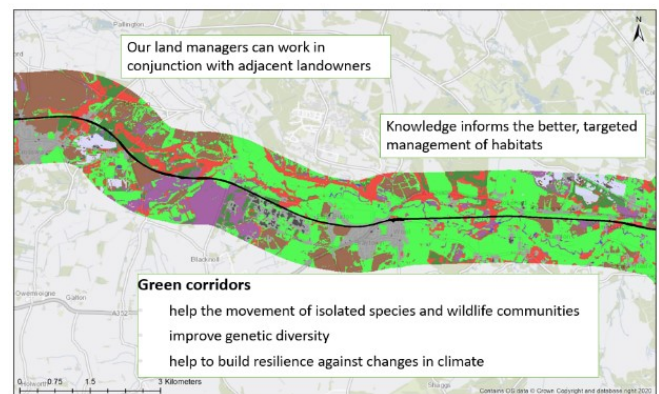
This poster provides information about the ISRA 2022 winner in the category "Environment" "Best Green Corridor"

NETWORKRAIL – BIODIVERSITY MEASUREMENT



Network Rail has worked with global remote sensing experts to deliver a safe and efficient method of biodiversity measurement. Biodiversity has been quantified for the first time in the 200-year history of the railway in Britain. Green corridors help the movement of isolated species and wildlife communities, improving genetic diversity and helping to build resilience against changes in climate.

- Habitats on the railway estate viewed in the context of the landscape → Land managers operate in conjunction with adjacent landowners
- Natural areas need to be bigger, better and more joined up → NR manages 52,000 hectares, but the habitat data collected covers 3.2 million hectares.



This new knowledge informs the better, targeted management of the habitats on the railway estate, improving the health and well-being of millions of passengers and neighbours.



- 2019: the target was set to achieve biodiversity net gain across NR estate by 2035. This innovative approach to mapping habitats alongside the railway has delivered a methodology for assessing biodiversity, and a baseline from which we can measure progress towards the goal
- 2020: NR worked with UK charity Buglife to improve pollinator habitat at a site where tree clearance was necessary for safety reasons. The habitat data showed isolated pockets of biodiverse habitat in an urban area. The collaboration between the charity, our contractors and ourselves will connect these habitats and begin to enhance the biodiversity in the local area whilst also achieving our obligation to run a safe railway.

Keywords: Green Corridor, Biodiversity Measurement, Remote Sensing

NR CONTACT [Neil Strong](mailto:Neil.Strong@sustainability@uic.org)
sustainability@uic.org