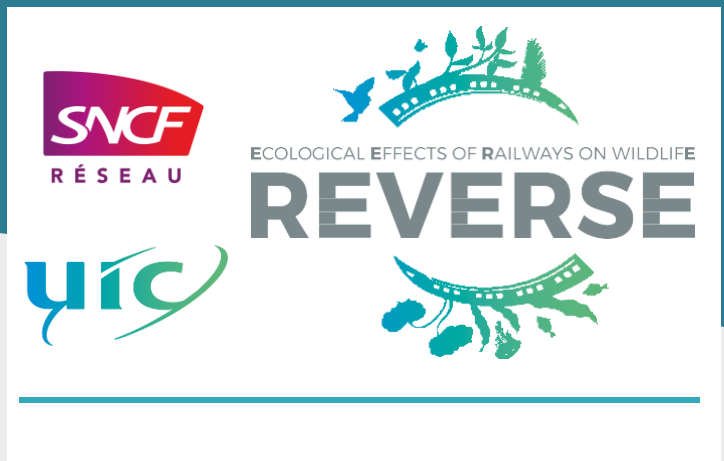


The International Union of Railways (UIC) is the worldwide professional association representing the railway sector and promoting rail transport. UIC leads an innovative and dynamic sector, helping our members find opportunities and build success. The purpose of UIC's **Ecological Effects of Railways on Wildlife (rEVERse)** project is to understand railway's role in the loss and gain of biodiversity and its habitats in Europe. It will seek to set out how railways can manage land in an ecologically sensitive way, providing solutions and best practice examples.



UIC is seeking solutions and best practice to manage rail lineside in a way that can help **halt and reverse the loss of biodiversity.**

This poster provides information about Theme 8: **“Good practice in the management, accessibility, and use of Data”**

## France

In 2021, SNCF wrote a guide for the installation of fences, intended for field agents. The primary objective of this guide is to facilitate the implementation of fences with regard to various criteria in order to improve rail operations by integrating all the issues:

- Safety and security issues (risk of collision, intrusion, etc.)
- Landscape integration (heritage, noise, co-visibility)
- Ecological continuity
- Administrative and regulatory constraints
- Maintenance of green borders and opportunities to optimize it
- The configuration of the infrastructure and the technical limits of the fence



## THE SOLUTION

SNCF aims to provide:

- a simple and rapid analysis of the sites at risk in their surrounding context in order to identify priority areas for development.
- a choice of simple measures adapted to each situation and each site, and as far as possible at a lower cost

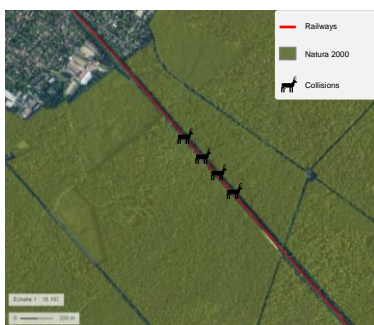
This guide is currently being tested on a section through the forest of Fontainebleau, near Paris. This field is interesting because it presents many problems:

- due to the high number of collisions recorded on this section
- because it is identified as a reservoir of biodiversity on a regional scale. It is also classified Natura 2000 area and biosphere reserve.

The region is also of significant landscape and cultural interest, as the railway section is one of the first French railway lines. It was used to bring the nobility of the 19th century to observe the landscape painters of Barbizon. Thus, the forest of Fontainebleau is at the origin of the first measure of protection of nature and landscapes in France: in 1861, the first "artistic series" are created by Imperial Decree, under the pressure of writers like Victor Hugo and painters of the Barbizon school.

### Outcomes

These multiple issues are taken into account by the "Guide to fences" and condition the location and type of fences that will be installed, as well as the wildlife facilities that are planned, such as the improvement of the two road bridges and bridges railways that border this railway section.



Keywords: Fences, Landscape, Safety



SNCF CONTACT: [Loic PIANFETTI](mailto:Loic.PIANFETTI)

[landuse@uic.org](mailto:landuse@uic.org)