

The International Union of Railways (UIC) is the worldwide professional association representing the railway sector and promoting rail transport. UIC leads an innovative and dynamic sector, helping our members find opportunities and build success. The purpose of UIC's Ecological Effects of Railways on Wildlife (rEVERSE) project is to understand railway's role in the loss and gain of biodiversity and its habitats in Europe. It will seek to set out how railways can manage land in an ecologically sensitive way, providing solutions and best practice examples.



UIC is seeking solutions and best practice to manage rail lineside in a way that can help **halt and reverse the loss of biodiversity.**

This poster provides information about Theme 3:  
**Mitigation for impacts of operation on species (collision, electrocution, others?)**

## NETHERLANDS

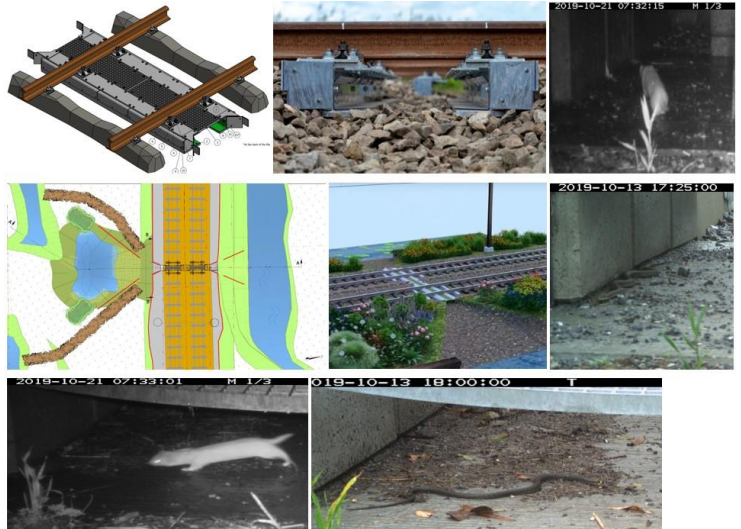
ProRail researches new ideas for fauna facilities, so animals can cross our railways easier and safer. This year we are finishing a test with what we call the principle of "Fauna Track Passage", in the form of de "Dwarsligger FaunaPassage" (Sleeper FaunaPassage).

## THE SOLUTION

This field test is a collaboration between ProRail, engineering firm Movares and the province of "Noord-Holland". The passage consists of modified sleepers with a plastic grid between them and a lowered path of fine fraction of ballast, which enables small animals such as frogs, snakes and toads to safely cross the network below the tracks. If more small animals can cross the tracks safely, more habitats are connected and more genes are mixed. Which in turn keeps populations bigger and stronger and thus nature will stay and/or become more divers.

The project is related to our assets of railway embankment, trackbed and railway tracks.

1. The "Dwarsligger FaunaPassage" (DFP) starts on/in the railway embankment with conductive devices such as vegetation and screens for animal guidance to the DFP.
2. Then the DFP crosses the trackbed and the safety path besides it by sort of a little tunnel consisting of concrete walls topped with a plastic grid.
3. This little tunnel runs out into an empty space between to steel, H-shaped sleepers (also topped with a plastic grid to ensure sufficient light enters the construction).
4. The other end of the tracks is then a mirror image of points 1 and 2 above.



### Outcomes

The test is to be ended in September 2021, but within a month from the start in August 2019 the intended animals (and more) started to actively and successfully use the "Dwarsligger FaunaPassage". They have done so ever since. Monitoring is done with wildlife cameras on site, and the animals on the collected images are identified by an ecologist

Keywords: Passage, Fauna, Amphibians



ProRail CONTACT **Jeff Diks**

landuse@uic.org