

The International Union of Railways (UIC) is the worldwide professional association representing the railway sector and promoting rail transport. UIC leads an innovative and dynamic sector, helping our members find opportunities and build success. The purpose of UIC's Ecological Effects of Railways on Wildlife (rEVERsE) project is to understand railway's role in the loss and gain of biodiversity and its habitats in Europe. It will seek to set out how railways can manage land in an ecologically sensitive way, providing solutions and best practice examples.



UIC is seeking solutions and best practice to manage rail lineside in a way that can help **halt and reverse the loss of biodiversity**.

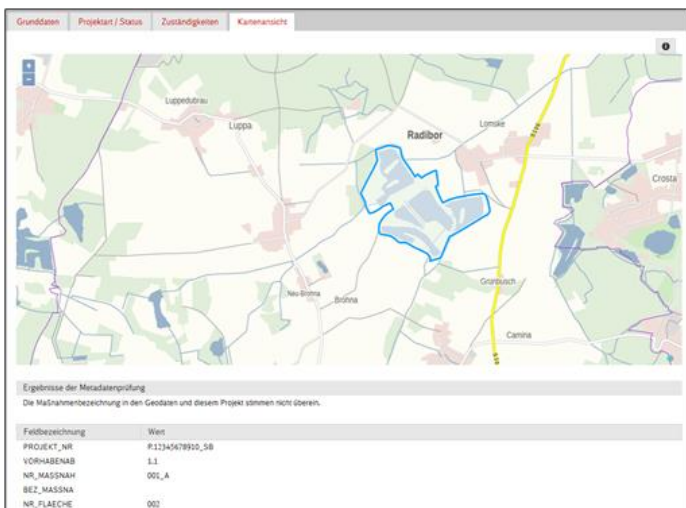
This poster provides information about Theme 6: **“Organisational KPIs, and ideally where these have evidence of biodiversity gain”**

## GERMANY

Within the scope of construction measures, Deutsche Bahn must provide compensation measures. These are planned/implemented in the construction project and must be maintained and cared for in regular operation over several decades. In the planning, implementation and maintenance of nature conservation compensation measures, there are many parties involved in the DB Group and frequent changes in personnel and responsibilities. It must be ensured that all information is available to those involved. In addition, Deutsche Bahn must make the information on the compensation measures available to the approval authorities.

## THE SOLUTION

All data on nature conservation compensation measures are recorded in the Group-wide IT tool “Fachinformationssystem Naturschutz und Kompensation” (FINK). The measures are documented and accompanied in the application throughout the entire process, i.e. from planning to implementation and maintenance.



### Outcomes

Our employees as well as external environmental planning offices can call up the current status of a compensation measure at any time.

The system standardises the entire environmental planning process and makes high-quality management of compensation areas possible. At the same time, FINK is used to create documents for authorities.

Keywords: Conservation, Measures, indicators



DB CONTACT Michael Below

landuse@uic.org