

The International Union of Railways (UIC) is the worldwide professional association representing the railway sector and promoting rail transport. UIC leads an innovative and dynamic sector, helping our members find opportunities and build success. The purpose of UIC's Ecological Effects of Railways on Wildlife (rEVERsE) project is to understand railway's role in the loss and gain of biodiversity and its habitats in Europe. It will seek to set out how railways can manage land in an ecologically sensitive way, providing solutions and best practice examples.



ECOLOGICAL EFFECTS OF RAILWAYS ON WILDLIFE

REVERSE



UIC is seeking solutions and best practice to manage rail lineside in a way that can help **halt and reverse the loss of biodiversity**.

This poster provides information about Theme 5:

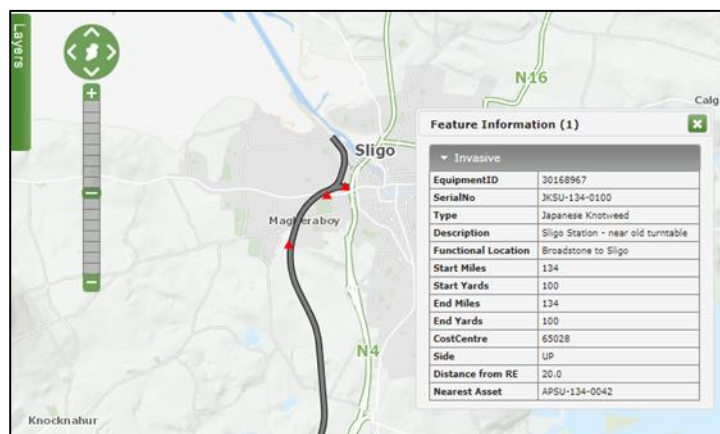
Robust, cost-effective and safe methods for collecting data (to establish a baseline)

IRELAND CASE STUDY

Irish Rail (Iarnród Éireann) carry out regular surveys of their lineside environmental assets to identify any signs of infestation by invasive alien species.

THE SOLUTION

A standard recording sheet is used to describe the infestation, including species, location, mileage and if there is any potential damage to nearby assets or third party property. The information is added to the internal GIS system (IAMS) where it can be combined with other spatial data layers, viewed by engineers prior to projects and highlights treatment planned or previously carried out. In this way it is possible to efficiently plan management action and track their effectiveness over time.



Keywords: survey, infestation, GIS



IR CONTACT [Jayne Ryan](#)

landuse@uic.org