

Shin, Ye-kyeong

Ph.D / Assistant Professor
Department of Architectural Engineering
Namseoul University

I am an Assistant Professor of Department of Architectural Engineering in Namseoul University, in South Korea.

My research field is focused on the **Urban Regeneration about Railway Stations & Surroundings** and **Sustainable Redevelopment** of those such **Environment, Urban Planning, Architectural Planning Mixed-use complex Railway Station Building, Transit Oriented Development study** on diversity planning strategies for railway building, relation with cities and constructing railway, urban sprawl and railway infra structure, etc.

Recently, I performed some projects about 'Research for Urban Regeneration Strategies based on Railway Station' with NRF (National Research Foundation in Korea) and 'Regional Urban planning and Master plan focused on Railway line in Incheon City as a research and development superintendent. And last year, I was invited professor in University of Tokyo from JSPS foundation in Japan for the purpose of study 'Railway Station Planning by Transit Oriented Development in Medium sized cities in Japan'.



Nextstation 2013 Conference
Moscow – Kazanskiy Station
17th – 18th October 2013

Application form

Short summary

<p>Title of the lecture: Station as a Key strategy for Sustainable Regional Regeneration: Seoul Railway Station</p>
<p>Theme (1 to 6) : 4. Design of the station, cultural area, ecoconstructione. f. Station to connect parts of the city</p>
<p>Summary</p> <p>Introduction</p> <p>Seoul Railway Station is built in 1923. It has kept on being transfigured for more than 110 years from the time, right after the construction to the present time, retaining the function of a railway station in the midst of rapid changes of Seoul</p> <p>It is an important urban facility for Seoul’s urban growth in modern age. It retains the function of a railway station in the midst of rapid changes of Seoul.</p> <p>The function of Seoul Railway Station as an urban facility, has different characteristics over time. It reflects the times well, with urban space of Seoul, railway transportation, social and political circumstances</p> <p>The revitalization of rail transport caused by the introduction of high speed train, the recognition of the historical value of the old Seoul Station building and the feature of Seoul Station building that became the internal part of urban facilities of the community, have created the possibility to reestablish the intrinsic function of a station building and played the pivotal role in the task to change the existing urban spatial structure into the Seoul Station building centric structure.</p> <p>Nowadays, Seoul metropolitan city had diverse projects in relation to the Seoul railway station like ‘the construction of national symbolic streets’ and ‘the restoration of the old Seoul Station building and the</p>

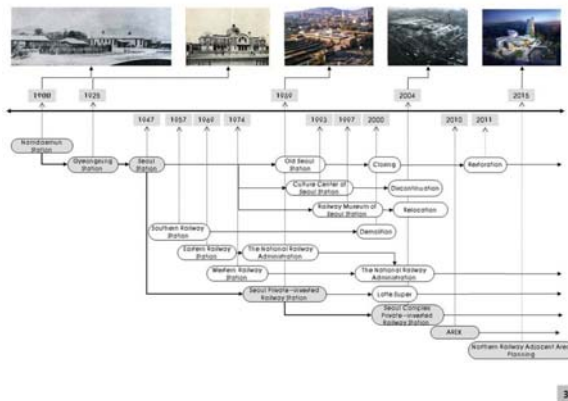
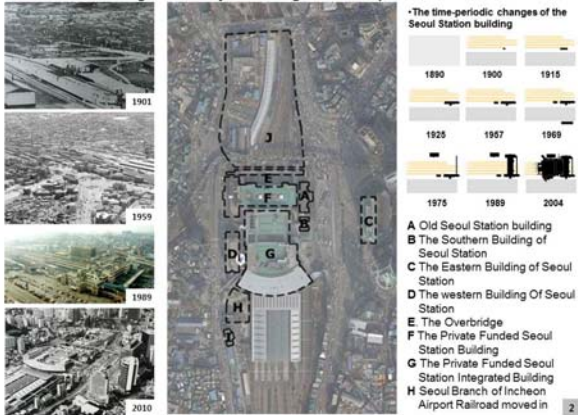
**Please send this form to guigon@uic.org
 Before May 22nd 2013**

cultural space creation'. It implies that Seoul Station building has historical value, and there is public demand for urban regeneration taking advantage of its building.

Key words

Railway station and surrounding area, Urban regeneration, Public Space for Citizen

Seoul Station Building and the Physical Change of Urban Space



Seoul Railway Station as a Key Strategy for Urban Regeneration

•Master plan for 'Development plan of northern area of the Seoul Station' competition.(2009)



•the restoration of the old Seoul Station building and the cultural space creation (2007) : **Cultural Station Seoul 284**



Historical Street from Seoul railway Station in Seoul

• the construction of national symbolic streets(2007)



Eventual comment: