

INTERNATIONAL FREIGHT CORRIDORS: What perspectives for Railways?



INTERNATIONAL UNION
OF RAILWAYS

Today, trade in goods is increasingly globalised. Already now **half a million TEUs or standard containers** could be transported between Europe and Asia if certain conditions, among them harmonisation, reliability, flexibility, speed ... were met.

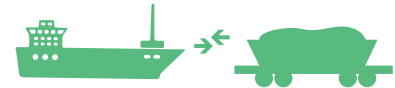


Railways are currently building credible alternatives to other transportation with **high performance rail** transport at the continental and intercontinental level.



Rail Freight Corridors **linking the Far East to Europe** are in development and being tested. Among them, the routes along the **Trans-Siberian** or "**New Silk Roads**" more on, the south.

Container transport by rail is very promising. It enables transport over long distances in half the time compared to transport by sea and at a **competitive price**.



Studies show that these Corridors are still a **niche business**, but offer **real potential** for growth.



Efforts are currently made by international, regional and subregional organisations, including UIC to **develop transit Corridors to facilitate cross-border transport** and to **enhance regional connectivity**.



One challenge and key to further development is the **connection of Intercontinental Corridors with European Corridors**. The "Corridor product" is a **guarantee of quality for the client** and reflects the railway aim at providing a quality product corresponding to its needs.

With the objective to develop rail Freight on international Corridors, UIC has established the **ECCO (project) Group** to cater for the European Market and the **Global Team of Experts Members Group (GTE)** for the transcontinental perspectives.



GTE serves as a platform for exchange among stakeholders. It initiates and steers projects creating the right framework conditions for **developing long-distance rail traffic**.

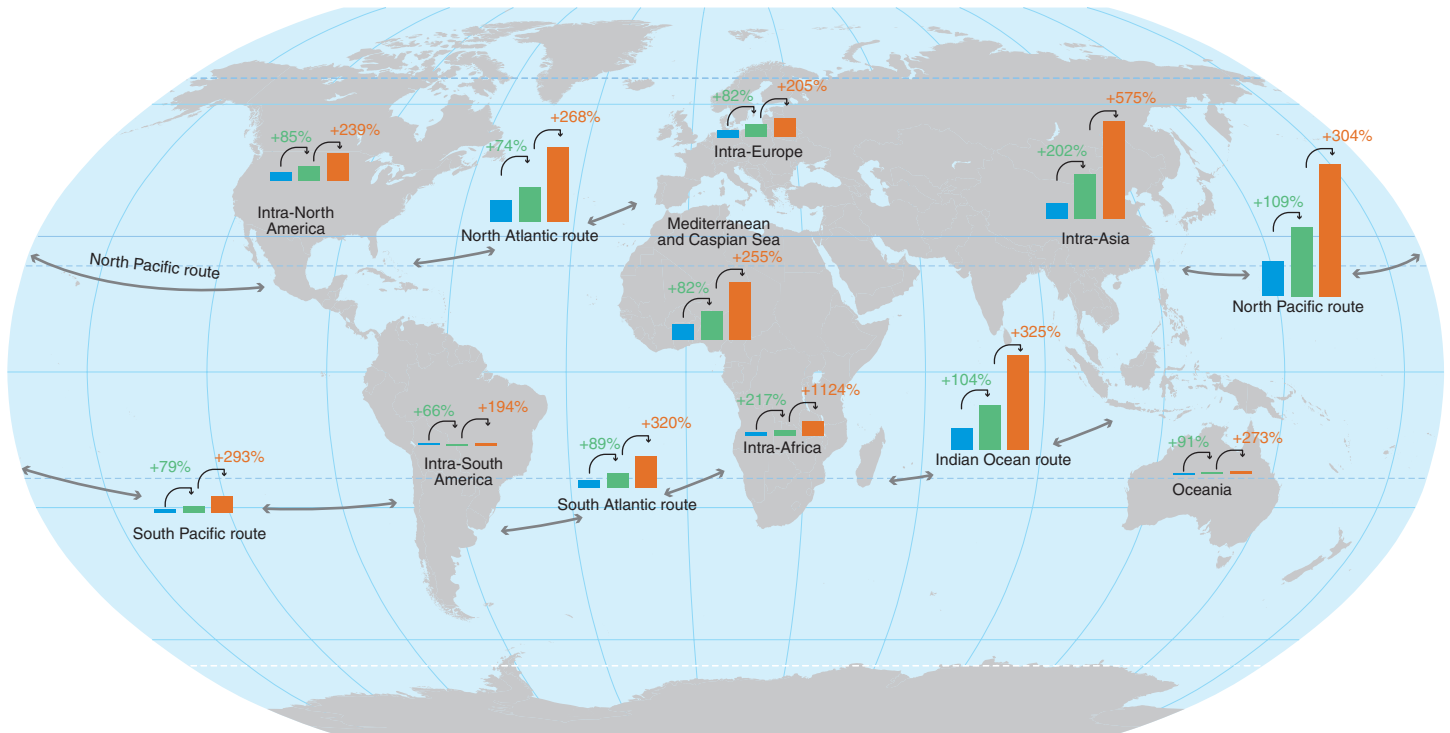
International freight in tonne-kilometers

(by corridor: 2010, 2030, 2050)



INTERNATIONAL UNION
OF RAILWAYS

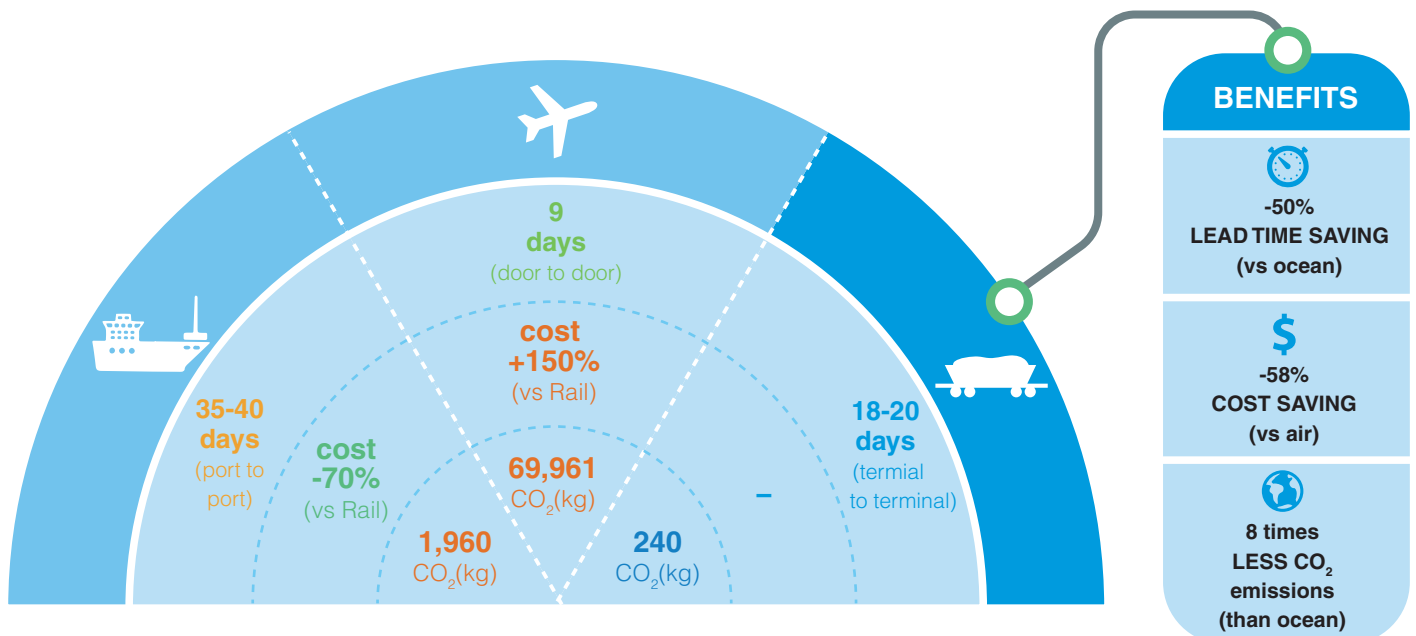
Freight volumes 2010 (blue) Freight volumes 2030 (green) Freight volumes 2050 (orange)



source : OECD

A preferential solution over medium & long distance

Estimation for delivery of a 10,5 tonnes cargo loaded 40' container from Duisburg to Shanghai in CO₂ emissions TTW



source : IJS Global / Gefco (GRFC 2016)

“ For UIC and its Members, the railway future is also along the Freight Corridors. ”

