

Ethio-Djibouti Railways Sh.Co.

COVID-19 Epidemic Impacts and Prevention Practices in EDR.

*Presented by:-
Tilahun Sarka (Eng.), MBA
Director General
May 07, 2020*



CONTENTS



01

COVID-19 Bulletin

- ⊙ COVID-19 in Ethiopia and Djibouti
- ⊙ COVID-19 in Africa

02

Employee Situation

- ⊙ Local Employee
- ⊙ Chinese Employee

03

Prevention Actions

- ⊙ Actions Planned
- ⊙ Actions Taken

04

Facilitation Required

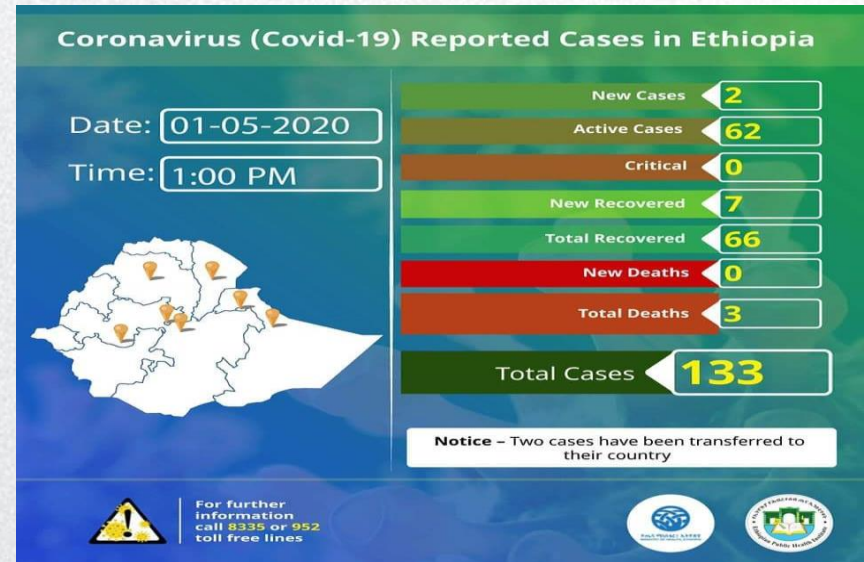


◆ COVID-19 Bulletin

➤ COVID-19 in Ethiopia and Djibouti

- COVID-19 in Ethiopia

As of May 1, 2020, 133 cases were confirmed in Ethiopia (including 4 Japanese citizens,, 1 British citizen, and 1 Austrian citizen, Chinese, etc, the rest Ethiopian Citizens). Many people were isolated and are under follow-ups.





◆ COVID-19 Bulletin

➤ COVID-19 in Ethiopia and Djibouti

• COVID-19 in Djibouti

As of May 01/2020, 1097 cases were confirmed positive in Djibouti (initially only one Spanish citizen on 19th of March). Among them 672 Cases recovered and so far only 2 Deaths confirmed.

Djibouti has good testing capacity where by 13,751 people were tested at the date of this report.



MINISTRE DE LA SANTE
Equité – Qualité – Proximité

REPUBLIQUE DE DJIBOUTI
Unité – Egalité – Paix

وزارة الصحة
العدالة – المساواة – القرب

Secrétariat Général



امانة عامة

D-01 : 1974 DJIBOUTI
Tél : (253) 35.06.43/32.05.04
FAX : (253) 35.63.00/35.06.47
N. 4811561201...MS

من 1974 جيبوتي
الهاتف : (253) 35 06 43 / 32 05 04
فاكس : (253) 35 63 00 / 35 06 47

Djibouti le, 01...MAI.2020

POINT DE PRESSE SUR LA SITUATION COVID-19 1^{er} Mai 2020

Ce **vendredi 1^{er} Mai 2020**, la situation se présente comme suit :

- **329 tests** réalisés ;
- **8 cas positifs au Covid-19** : il s'agit toujours de personnes de contact ;
- **30 cas guéris** ;

A la lumière des données de ces derniers jours, on observe une évolution réconfortante marquée par un ralentissement de nouvelles contaminations et un taux de guérison en constante augmentation. Compte tenu des mesures appliquées nous restons confiants que l'épidémie va progressivement décliner au cours des prochains jours. Notre objectif est de casser la chaîne de transmission définitivement dans le plus bref délai.

Cependant, pour maintenir ce cap nous comptons impérativement sur le respect du confinement et des gestes barrières que nous cessons de rappeler à chaque occasion :

- Se laver les mains régulièrement au savon ;
- Tousser ou éternuer dans le pli du coude ou un mouchoir qu'il faut jeter immédiatement ;
- Respecter une distanciation sociale d'au moins 1 m ;
- Désinfecter les surfaces de contact régulier ;
- Limiter les déplacements au strict essentiel ;

Le **bilan** depuis le début de l'épidémie on dénombre :

- **13 751 tests** ont été réalisés ;
- **1097 cas positifs au Covid-19** ont été détectés ;
- **672 cas** sont confirmés **guéris** ;
- **2 décès** ;

Restez chez vous.

Le Secrétaire
Dr **Saleh Baroj** Tourab
Rép. de Djibouti



◆ COVID-19 Bulletin

➤ COVID-19 in Africa

As of May 01/2020, a total of 38,706 confirmed cases have been diagnosed in Africa,

of which 630 cases are existing, more than 10,000 cases have been cured,

and 1629 cases died.



COVID-19

WHOAFRICAUPDATE01.05.20



Country	Total cases	Total deaths	Country	Total cases	Total deaths	Country	Total cases	Total Deaths
WHO Africa Region			Congo	220	9	Angola	27	2
South Africa	5,647	103	Guinea Bissau	201	1	Botswana	23	1
Algeria	4,006	450	Liberia	141	16	Namibia	16	0
Ghana	2074	17	Madagascar	132	0	Sao Tome & Principe	16	1
Nigeria	1,932	58	Ethiopia	131	3	Burundi	15	1
Cameroon	1,832	61	Sierra Leone	124	7	Gambia	12	1
Guinea	1,495	7	Cabo Verde	121	1	Seychelles	11	0
Cote d'Ivoire	1,275	14	Togo	116	9	Mauritania	8	1
Senegal	933	9	Zambia	106	3	Comoros	1	0
Niger	719	32	eSwatini	100	1	WHOAFRO Total	25,704	969
Burkina Faso	645	43	Benin	84	2	WHO Eastern Mediterranean Region		
DRC	572	31	Uganda	81	0	Egypt	5,537	392
Mali	490	26	Mozambique	76	0	Morocco	4,359	168
Tanzania	480	17	Chad	73	3	Djibouti	1,089	2
Kenya	396	17	CAR	64	0	Tunisia	980	40
Mauritius	332	10	Eritrea	39	0	Somalia	601	28
Equatorial Gui	315	2	Malawi	37	3	Sudan	375	28
Gabon	276	3	South Sudan	35	0	Libya	61	2
Rwanda	243	0	Zimbabwe	32	4	Africa Total	38,706	1,629

WHO only publishes verified information. Data may reflect differences in reporting methods, retrospective data consolidation, and reporting delays.



◆ Employee Situation



- **Local Employee**

As of May 01, 2020 there are a total of 2,124 local employees, of which 1721 are from Ethiopia and 403 are from Djibouti.

- **Chinese Employee**

As of May 01, there are a total of 658 Chinese employees, of which 614 are on-duty, 60 China-returned employees were isolated in our own isolation centers in Ethiopia and Djibouti after arrival, and 44 were on annual leaves, not returned.



Covid-19 In EDR



- On April 22/2020 Three Staff members tested Positive.
- Due to this reason 68 Staff members isolated having suspect of contact with them.
- On April 26/2020 Two more staff members tested positive among 50 surprise check.
- 35 Train Masters were soon isolated and immediately Tested.
- Luckily enough all of them came out to be negative.
- Those with positive cases are isolated and being treated with medications.



Impact on Rail Operation



- Passenger transport, affected by the pandemic situation, the international passenger train was stopped on March 19, and the intercity train was stopped on March 25/2020.
- Freight Operation also affected due to sudden isolation of Operation and Maintenance Staff.
- Due to lock down as Government Regulation, 60% of staff took leave or work from home.
- Generally there is degraded mode of Rail Operation and loss in Revenue. Rail business interruption took place.



◆ Prevention Actions



- **Actions Planned**
 - EDR established the COVID-19 Epidemic Prevention Office to lead outbreak prevention work.
 - In accordance with the actual situation of the Ethio-Djibouti Railway, various epidemic prevention systems were formulated, In order to guide employees to implement the system requirements.
 - To print posters for epidemic prevention and control.
 - All arrived Chinese employees must proceed 14-days isolation, postpone Chinese employee annual leaves.
 - To set up EDR's isolation centres, formulate isolation measures and isolation release standards.



Prevention Actions Cont...



- To establish Ethiopia CDC-EDR-MC epidemic joint prevention and control mechanism.
- To establish a cooperative relationship with local hospitals. If suspected symptoms appeared in employees , they will be arranged for treatment by dedicated hospitals directly to avoid cross infection.
- Organize a trainings on COVID-19 epidemic prevention and control for local employees
- To develop general measures for suspected symptoms in public places and trains.
- Formulate procurement plans of epidemic prevention materials



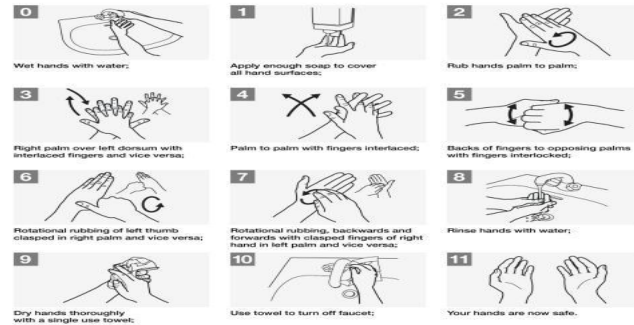
◆ Prevention Actions

● Actions Taken

How to Handwash?

WASH HANDS WHEN VISIBLY SOILED! OTHERWISE, USE HANDRUB

⌚ Duration of the entire procedure: 40-60 seconds



World Health Organization

Patient Safety

A World Alliance for Better Health Care

SAVE LIVES
Clean Your Hands

Reduce your risk of coronavirus infection:



Clean hands with soap and water or alcohol-based hand rub

Cover nose and mouth when coughing and sneezing with tissue or flexed elbow



Avoid close contact with anyone with cold or flu-like symptoms

Thoroughly cook meat and eggs



No unprotected contact with live wild or farm animals



World Health Organization



COVID-19 Prevention Systems and Posters



◆ Prevention Actions

- Actions Taken



◆ Work and Meeting with Face Mask



◆ Prevention Actions

- Actions Taken



◆ Body Temp Check and Workplace Disinfection



◆ Prevention Actions

- Actions Taken



◆ Outbreak Prevention and Control Knowledge Training

◆ Free Epidemic Prevention Materials for Electric Locomotive Driver Trainees in China



◆ Prevention Actions

- Actions Taken



◆ Body Temp Check for passengers by
Ethiopian Local Public Health Authorities



◆ Prevention Actions

- Actions Taken



◆ Epidemic Prevention Materials Distribution



◆Facilitation Required

- To provide face masks and protective clothing for Ethiopian functional departments like national security, local epidemic prevention authorities, immigration and customs along Ethio-Djibouti Railway.
- To add more body temp screening equipment at Lebu Station and Dire Dawa Station.
- Working closely with important Government Ministries like Ministry of Health of Ethiopia and Ministere de la Sante Rep de Djibouti.
- Participating in Covid-19 task force organized by UIC.



Post COVID-19 Situation



- As EDR is still a new start-up, creating passenger confidence and keeping social distancing procedures will still be a challenge.
- Rail Freight import side could face congestion and capacity limitation will bring about pressure.
- Multi stakeholder management might come up with new systems and complex digital approach.
- Work attitude and Organizational Culture might take a new shape.



UIC Support for Members



- Management of COVID-19 Task force guideline.
- Potential measures to restore confidence in rail travel following the COVID-19 pandemic.
- Exchange and sharing of information on Covid-19 with the rail community.
- UIC, as the technical platform for railway cooperation at world level, is the place of exchange for best practice, bringing together many networks of experts.
- UIC Africa is also a nearest support platform for African Railways and it has to continue creating more opportunities for continental networks.

2020

Thank You

