

Driving a Sustainable Future with Rail

2025 edition of **SUSTAINABILITY ACTION WEEK**

#uicsustainabilityactionweek

WELCOME



Lucie Anderton

Director for
Sustainability

UIC



SUSTAINABILITY
Action Week

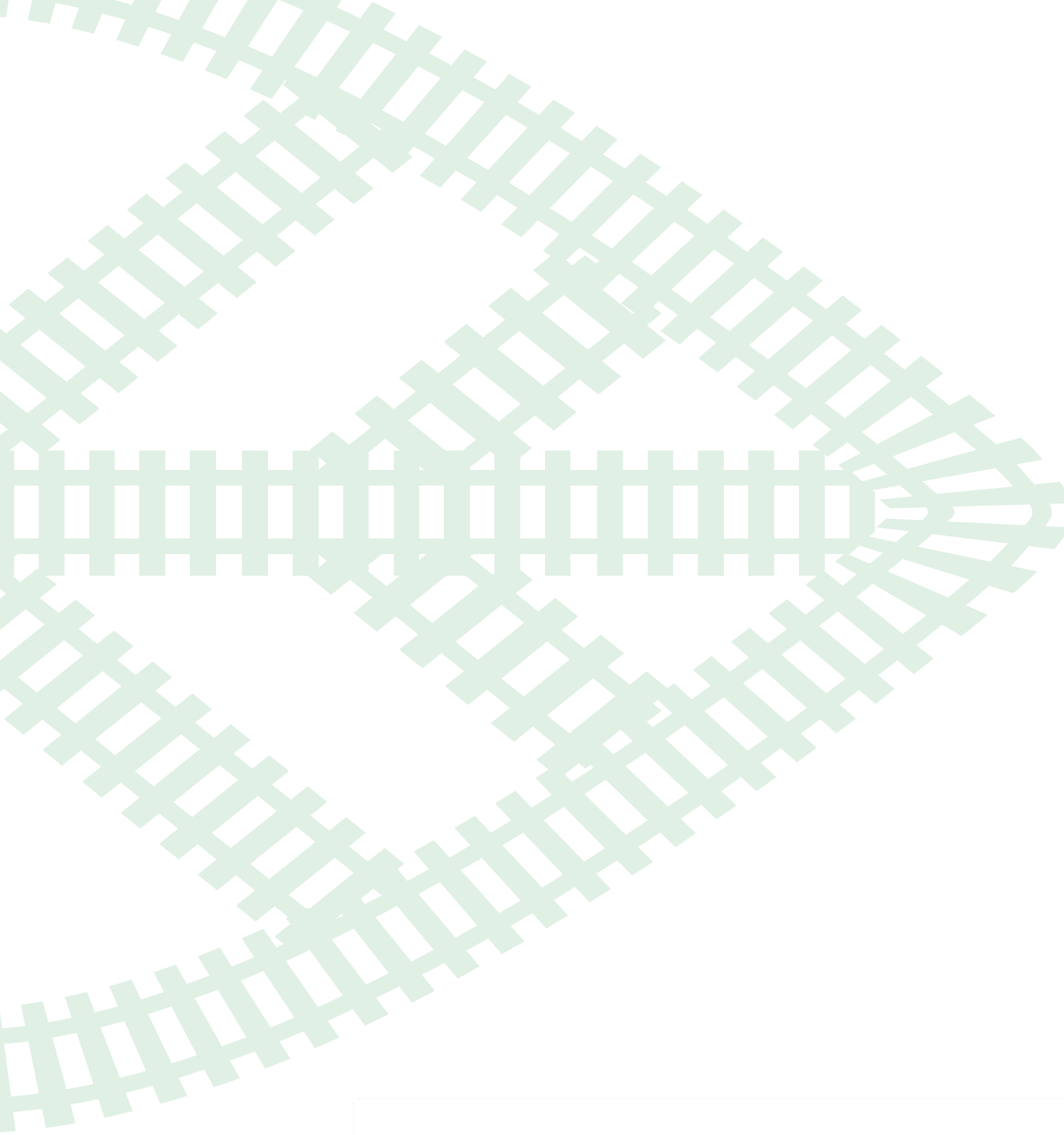
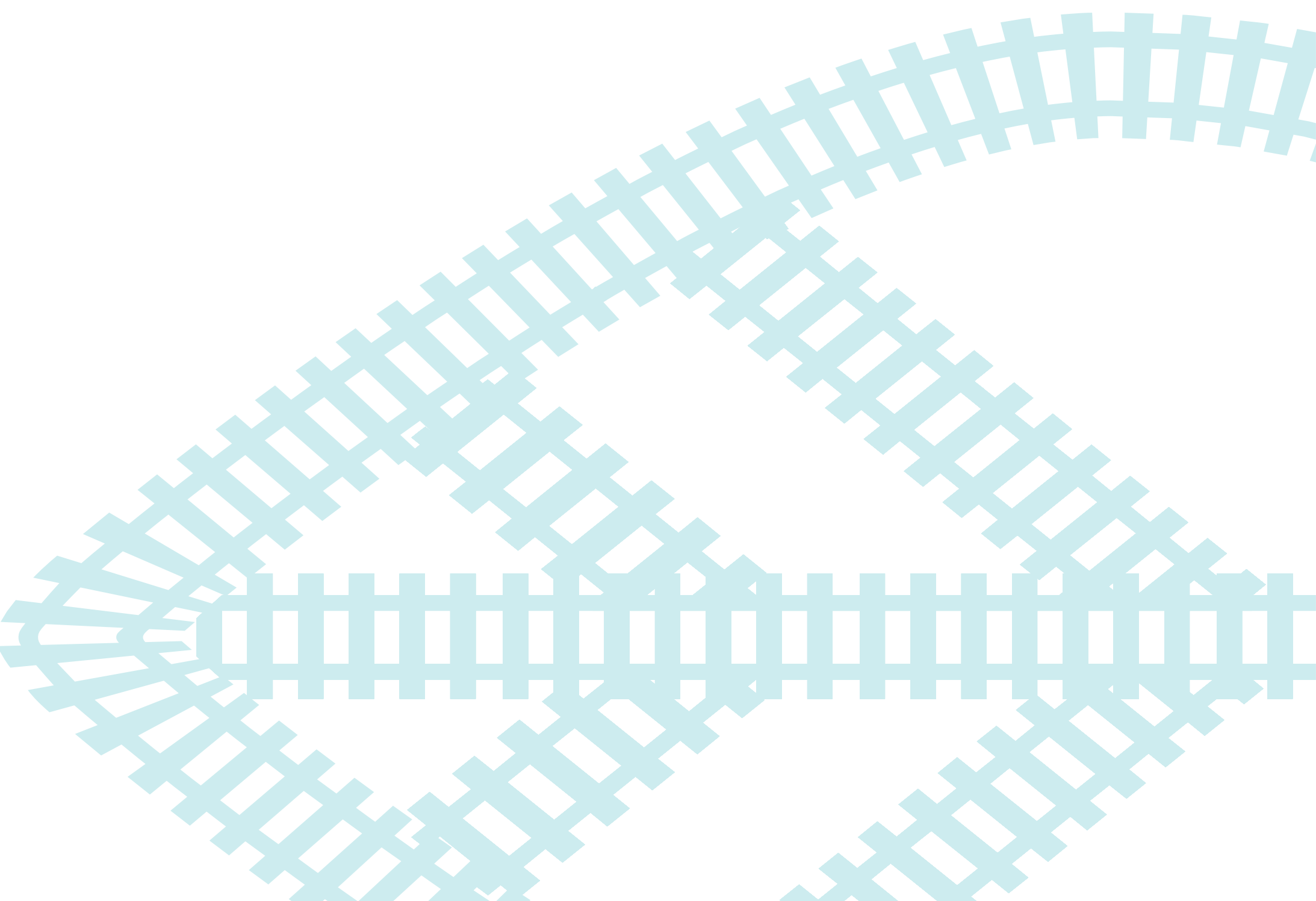


**OUR
SPONSORS**

Gold



Silver



PROGRAMME

Mon, 10 March	Tue, 11 March	Wed, 12 March	Thu, 13 March
	<div>08:30 Breakfast Session: Engaging Stakeholders in the climate challenge (Atrium)</div> <div><div>09:00 Railway Noise Day 1: Being a responsible neighbour (Stephenson & F.List)</div><div>9.30 Sustainable Procurement meeting (ERPC members only - Room 205)</div></div> <div><div>10:00 Energy & CO2 Long-term prospects Workshop (Room 203)</div><div>09:00 Train2BEqual Gender Equality Workshop (Gare Montparnasse)</div></div>	<div>08:30 Networking Coffee morning (Atrium)</div> <div><div>09:00 Railway Noise Day 2: ERJU Quieter Rail (Stephenson & F.List)</div><div>09:30 Zero Waste Workshop: the Power of Procurement (Room 203)</div></div>	<div>08:30 Networking Coffee morning</div> <div><div>09:00 Sustainable Land Use Workshop: Tracks of Harmony - Railways & Nature (Room 203)</div><div>10:00 Air Quality management Workshop (Room 302)</div></div>
<div>From 12.00 - Registration & Network lunch from 12.30</div>	12.30 - 13.30 Networking Lunch (Mezzanine)		
<div>13:30 Opening Ceremony Plenary (Stephenson & F.List)</div> <div><div>15:00 Networking & Poster session (Stephenson & F.List)</div><div>15:30 ECO2 Sector Meeting (members only – Room 303)</div></div> <div>16:30 Panel : Is Sustainability integrated into business strategy? (Stephenson & F.List)</div> <div>17:30 Networking Reception (Atrium)</div> <div></div>	<div>13:30 Railway Noise Day 1: Being a responsible neighbour (Stephenson & F.List)</div> <div><div>13:30 Energy & CO2 Long-term prospects (Room 203)</div><div>13:30 Sustainable Tourism (Room 303)</div></div> <div>18:00 Networking Reception (Atrium)</div> <div></div>	<div>13:30 Climate change adaption Workshop: Partnerships for System Resilience (Stephenson & F.List)</div> <div>13:30 Zero Waste Workshop: Digital Passports (Room 203)</div> <div>15:30 Sustainability Reporting (Room 203) +Sustainability Reporting World Café</div>	<div>13:30 Sustainable Land Use Workshop: Tracks of Harmony - Railways & Nature (Room 203)</div> <div>13:30 Air Quality Workshop (AQ sector members only – Room 302)</div>



OPENING



Lia Talarico

Chair of UIC
Sustainability
Platform

Trenitalia



Does Rail Matter? The Future Of Global Sustainable Transport



Ashley Acker

Expert on Women's
Empowerment in Rail
Transport

UN ESCAP



Sylvain Haon

Sr Director Strategy
& Transformation

UITP



Oskaras Alšauskas

IEA Energy Modeler
and Analyst

IEA

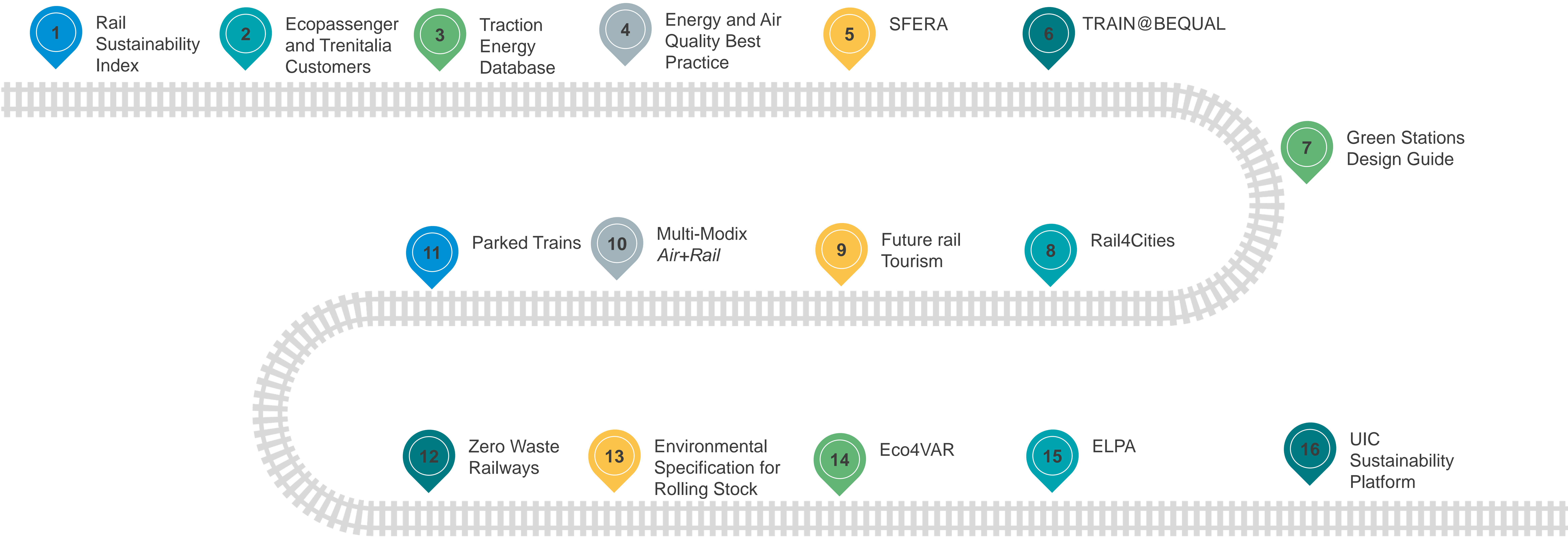


Bertrand Goulou

Principal Transport
Specialist

**Asian
Development Bank**

POSTER PITCH



A decorative graphic in the top left corner consisting of a series of parallel green lines forming a track-like pattern that curves upwards and to the right.

ENJOY THE MINGLING

SHARE THOUGHTS ON THE SOCIALS
WITH
#UICSUSTAINABILITYACTIONWEEK

TAG US WITH @UICRAIL

What's Next?
**Back in here for the next plenary
panel at 16.30 “Is sustainability
integrated into business strategy?”**

IS SUSTAINABILITY INTEGRATED INTO BUSINESS STRATEGY?

Join in on
Slido.com
#4135 364



How can sustainability
regulation can be turned
into an opportunity for
the railway sector?



Ethem Pekin

Head of Economic
Policy and
Sustainability
CER

Placing sustainability
at the heart of your
business strategy:
The case at RENFE



Adrián Fernández

Director of Sustainability
and Energy Efficiency

RENFE



Join in on
Slido.com
#4135 364

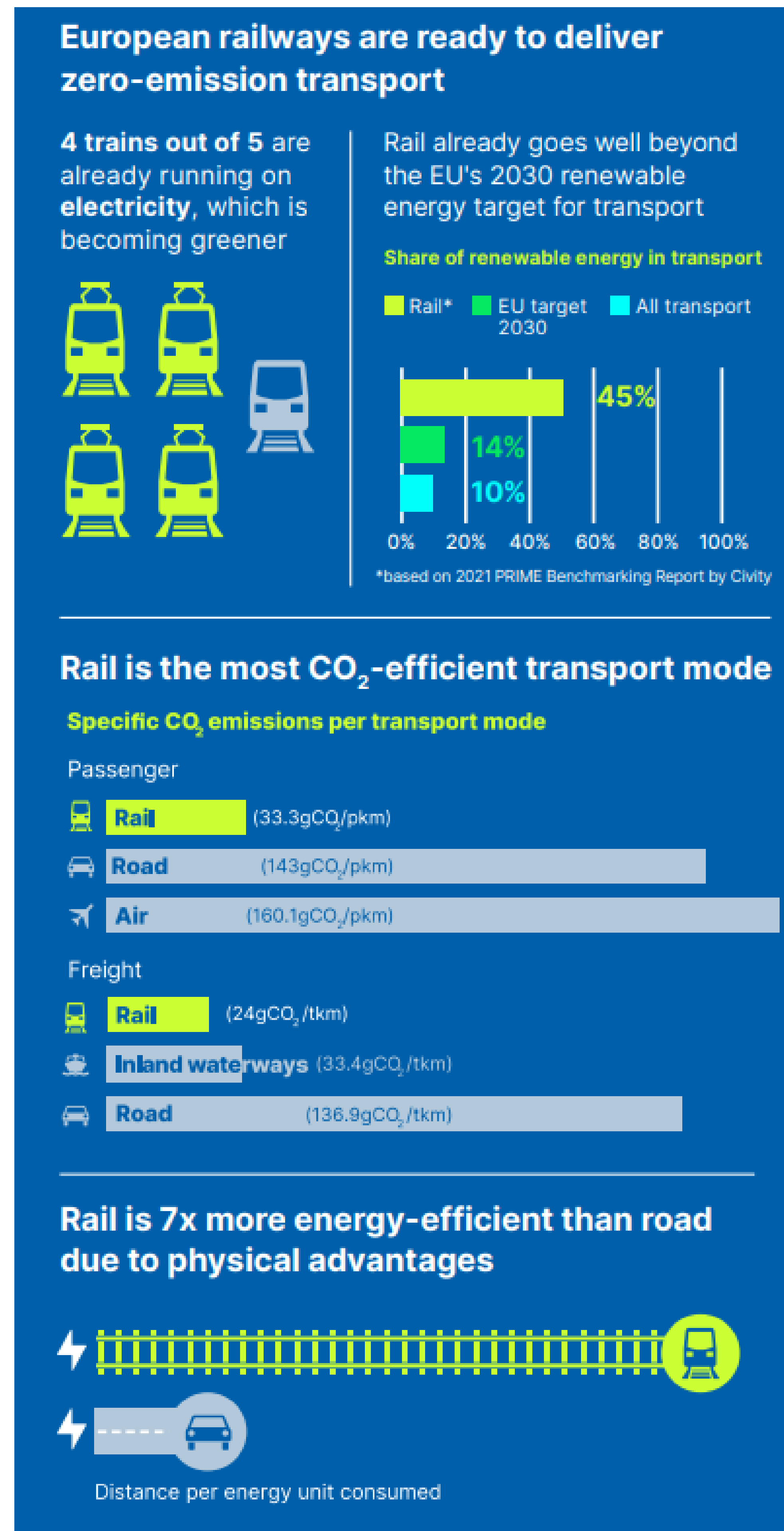


Ethem Pekin

Head of Economic
Policy and
Sustainability
CER

HOW CAN SUSTAINABILITY REGULATION CAN BE TURNED INTO AN OPPORTUNITY FOR THE RAILWAY SECTOR?

CREATING MORE VALUE FOR RAIL



Rail is already a highly electrified and energy efficient form of transport

With 81.6% of traffic already running on electricity in Europe, the railway sector is already well advanced on the pathway towards electrification that is based on fully decarbonised power system.

With a 52% share of renewables , rail already goes well beyond the current EU renewable energy target for transport and a number of railway companies are supporting the greater deployment of renewables through their own production or through entering into long-term contracts (PPAs) to support deployment.

Railways support higher ambitions in sustainability

Rail sector embrace **sustainability** as an opportunity to create new strategies, services and business models for long-term value

Railway companies could quantify the costs and revenue opportunities and at the same time identify risks from not taking action

A higher ambition in sustainability legislation matters for modal shift to rail, attracting talent and accessing capital

Regulations remain a challenge for businesses, including railways but it's an opportunity too.

POLICY REQUEST

Railways invited policymakers to position railways at the centre of any array of policy tools for promotion of sustainability and prosperity because of three main features:

“Modal shift is paramount for a more sustainable, more secure, socially and economically fairer, stronger Europe.”

1

Railway are the most sustainable mode of transport

2

Railway’s energy efficiency will help decrease Europe’s energy consumption, increase Europe’s share of renewable energy sources, and increase Europe’s independence from non-EU energy sources

3

Railways are efficient investors and contribute to the creation of sustainable ecosystems

How to get there?

- A. Ensuring fair competition between modes
- B. Ensuring adequate financing of railways
- C. Digitalising rail services and ensuring the deployment of rail’s key enablers: ERTMS (and FRMCS), DAC, DCM
- D. Recognising the need for to a new approach to market and competition policies

Better passenger services for all
 More digital rail freight logistics integrated with other modes
 A higher capacity infrastructure

RAILWAYS AMBITIONS

Railway will thrive once high ambition are matched with an access to
 financing at lower costs
 Better engagement with customers, employees, closer dialogue with
 governments, investors and financial institutions

Business case to consider

The establishment of a comprehensive, pan-European high-speed rail (HSR) network, seamlessly linking all EU capitals and major urban centres, would represent an unparalleled opportunity to revolutionise European travel and catalyse EU integration. By ambitiously connecting the continent's most important cities, this project stands to significantly elevate rail's role in long-distance passenger transportation, aiming to capture more than 50% of the market share. This initiative is not merely an advancement in transportation infrastructure; it represents a critical step toward forging a more connected, accessible, and unified Europe. Its realisation will serve as a cornerstone in the EU's journey towards enhanced connectivity, economic growth, and environmental sustainability, underscoring its profound importance for the future of the European Union.

ENRICO LETTA

**MUCH
 MORE
 THAN A
 MARKET**

SPEED, SECURITY, SOLIDARITY

Empowering the Single Market to deliver a sustainable future and prosperity for all EU Citizens

April 2024

PLACING SUSTAINABILITY AT THE HEART OF YOUR BUSINESS STRATEGY: THE CASE AT RENFE

Placing sustainability
at the heart of your
business strategy:
The case at RENFE

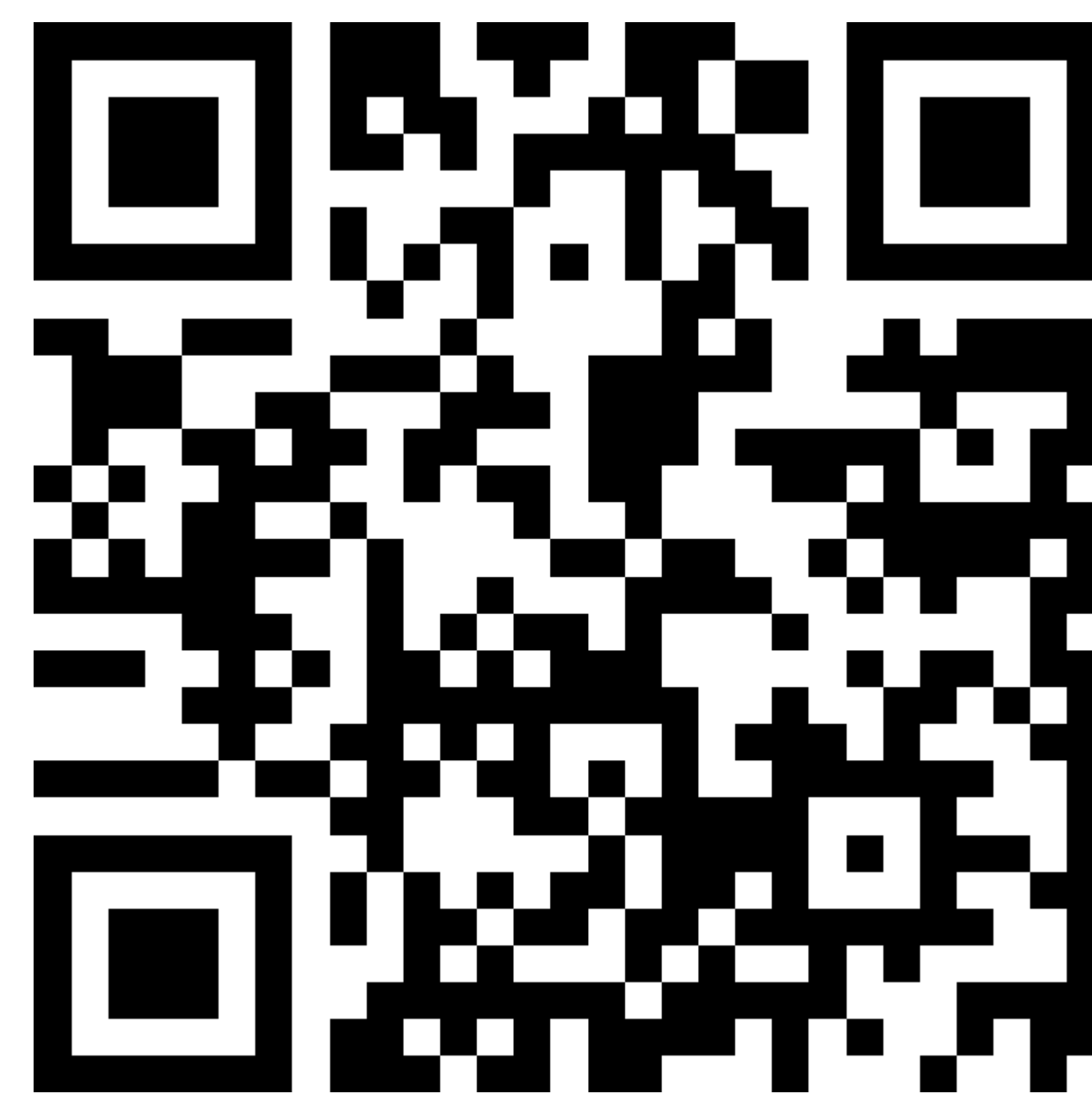


Adrián Fernández

Director of Sustainability
and Energy Efficiency

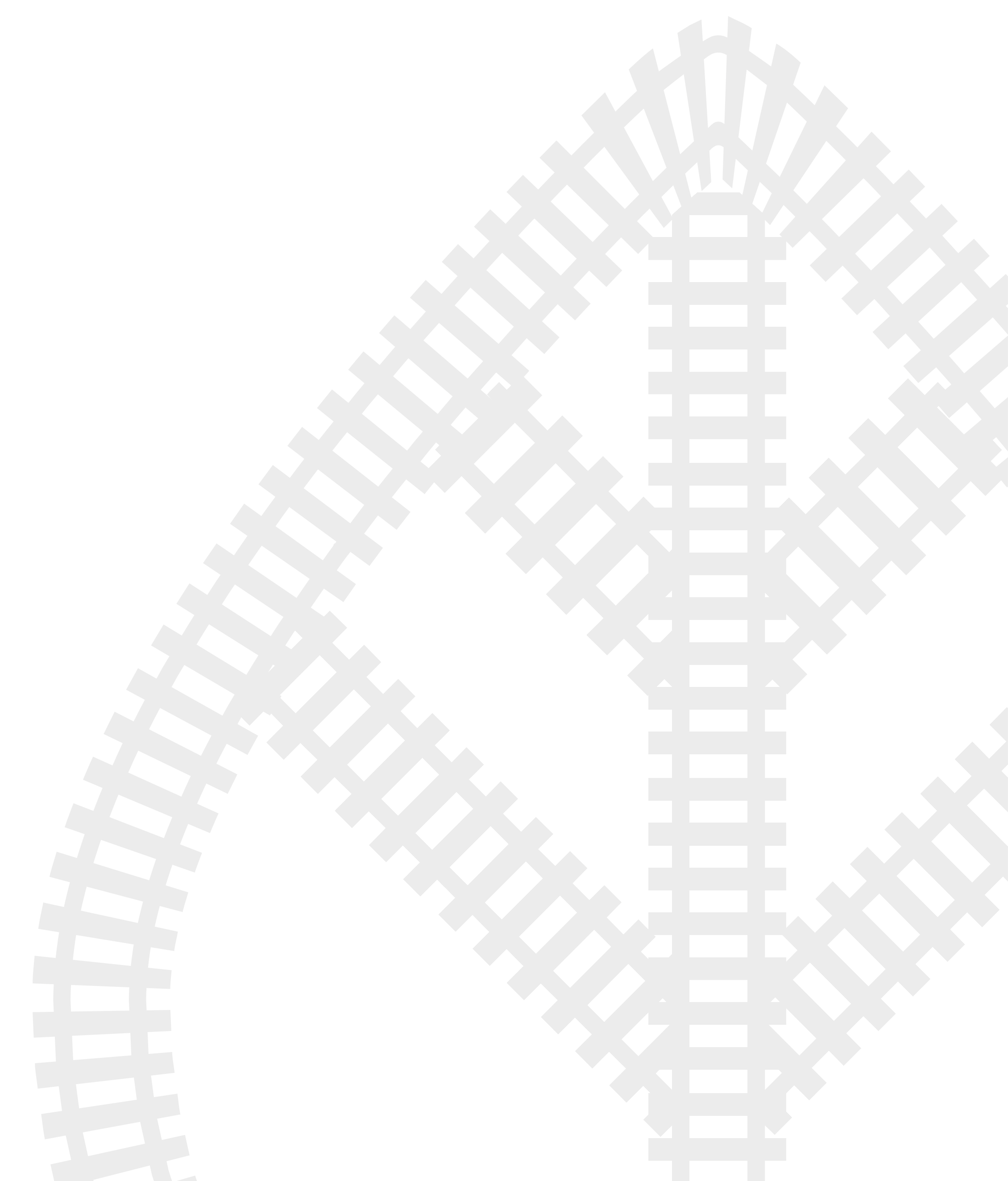
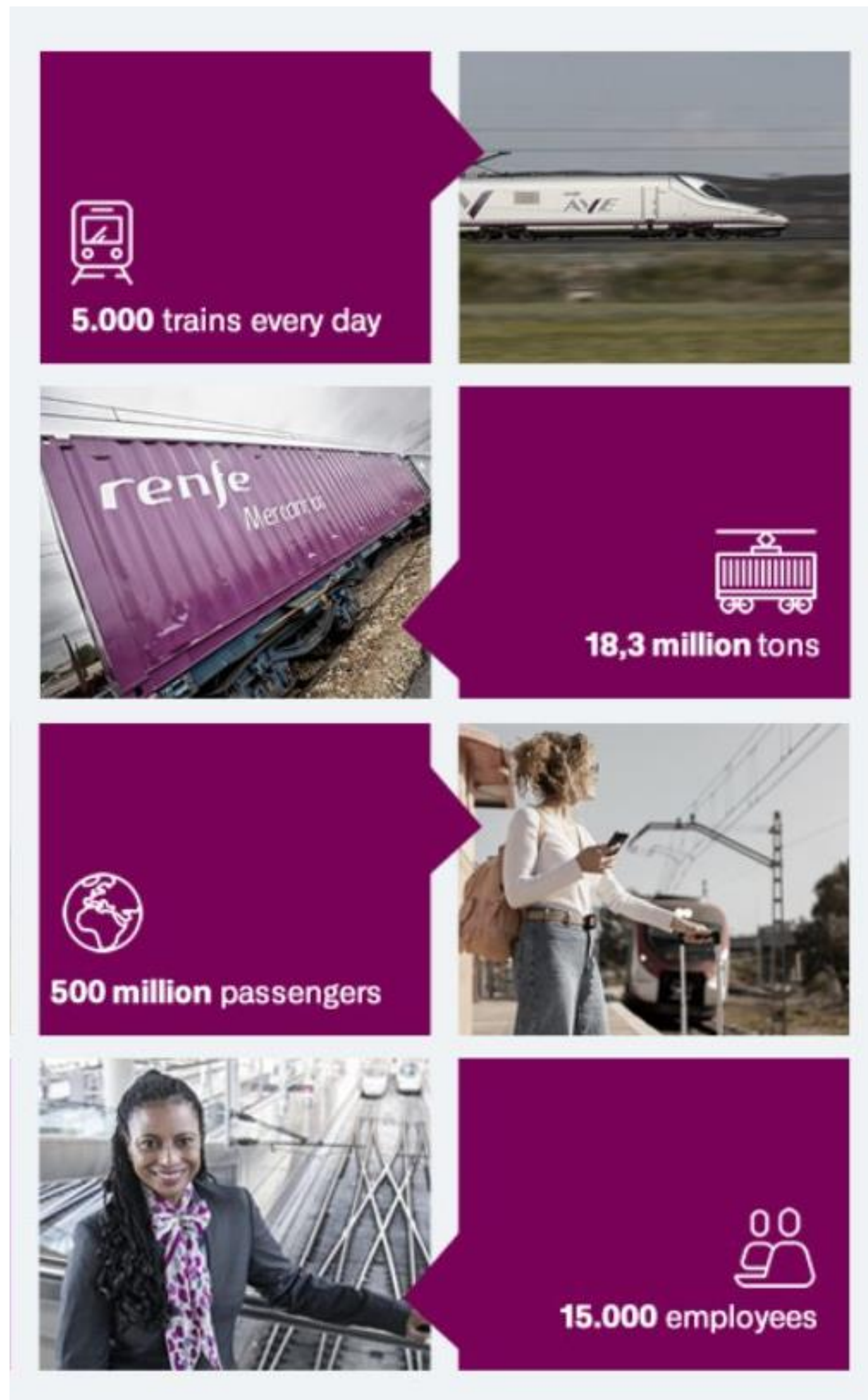
RENFE

Join in on
Slido.com
#4135 364



PLACING SUSTAINABILITY AT THE HEART OF OUR BUSINESS STRATEGY

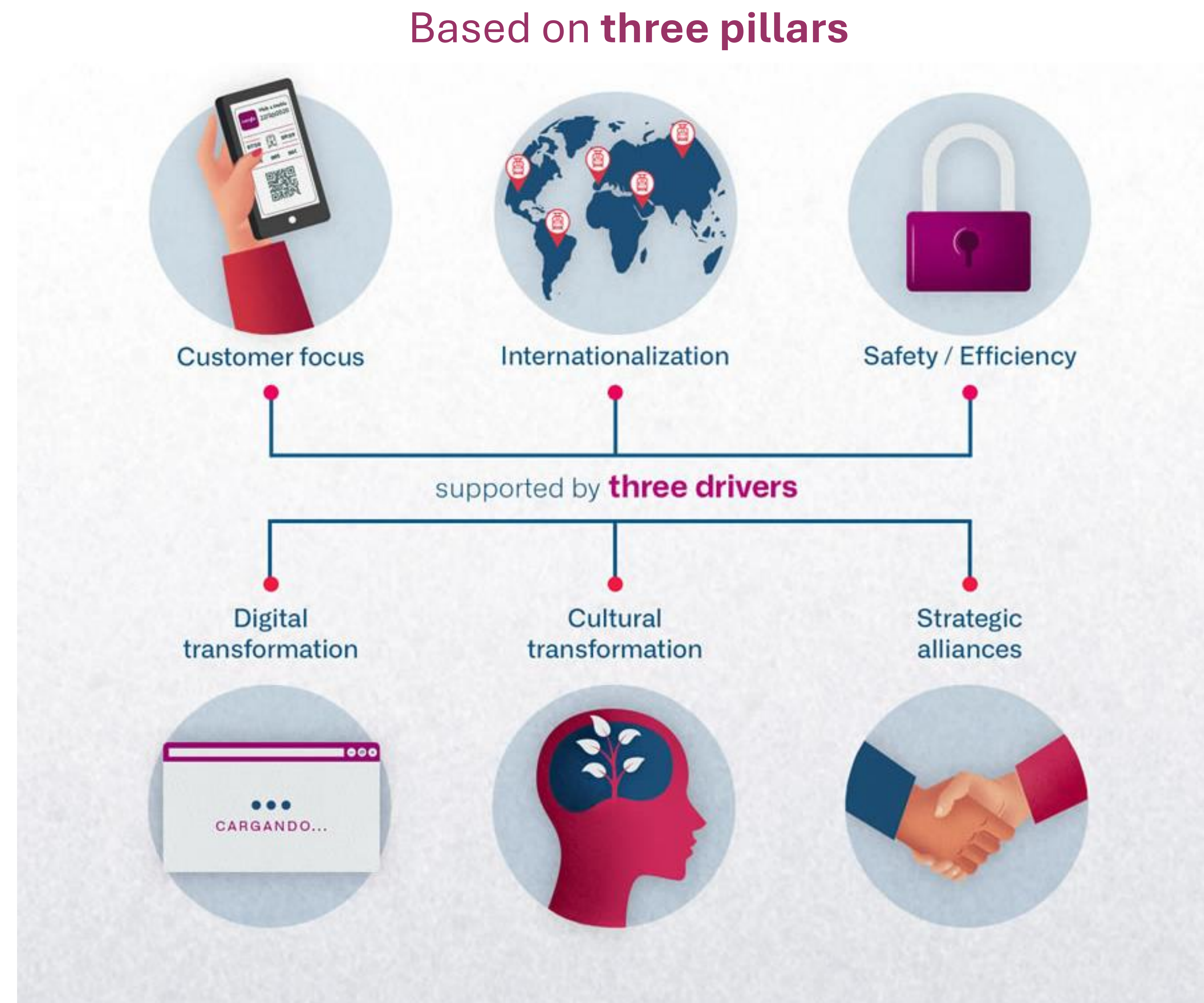
THE CASE OF *renfe*



OUR STRATEGIC PLAN

Approved in 2021 in a post-pandemic context and prior to rail liberalization.

- customer focus
- internationalization
- digitalization
- cultural transformation



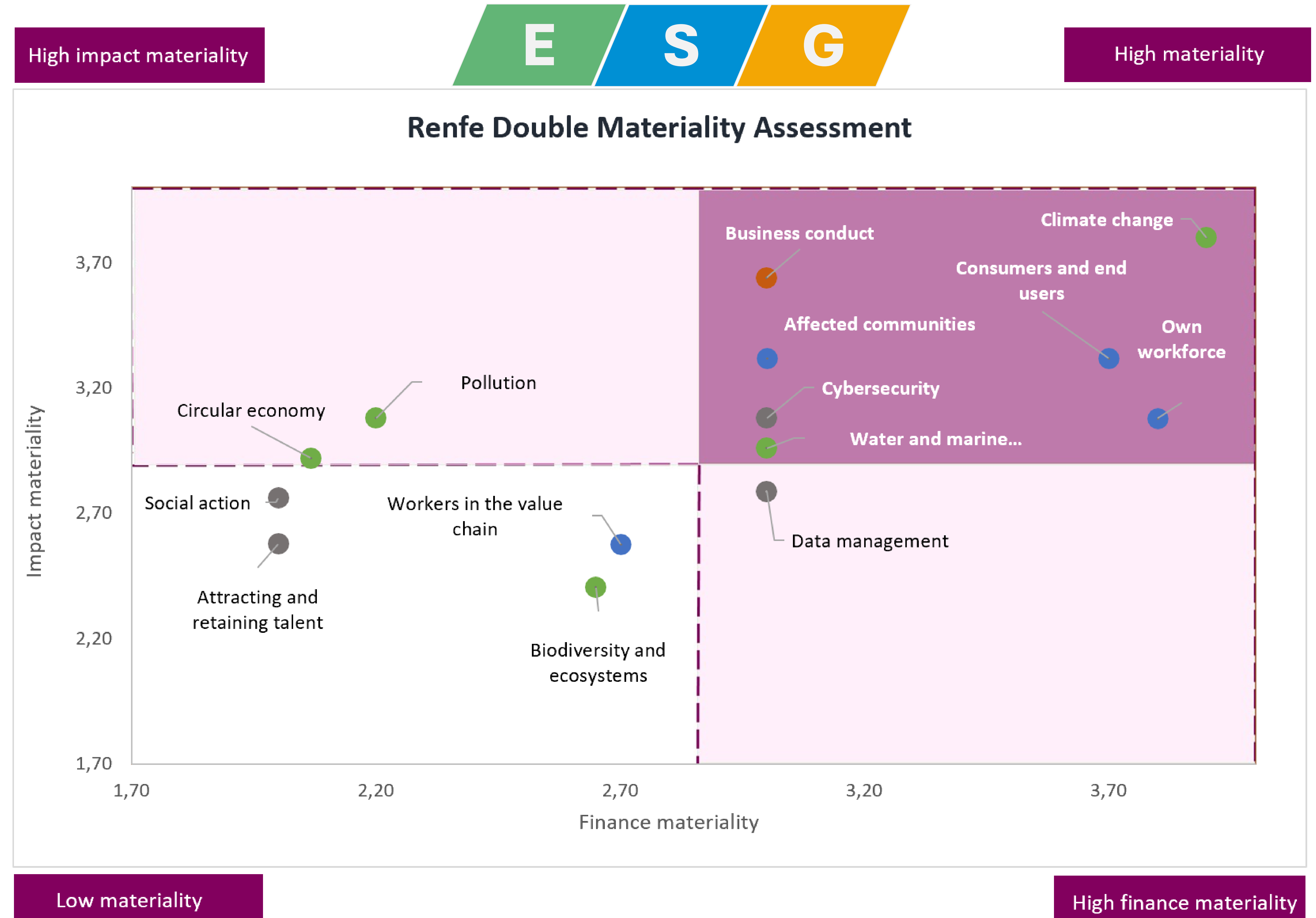
A NEW SUSTAINABILITY MASTER PLAN



- Sustainability as a **competitive** factor
- **ESG** vision at the core
- Emphasizing **public** value
- Adapted to new EU directives
- **211 actions** in 36 pillars

DOUBLE MATERIALITY ASSESSMENT

- Contribution from all involved areas
- Over **200** impacts, risks and opportunities assessed
- 7 topics marked as ‘**high double materiality**’
- 10 topics marked as ‘**relevant**’



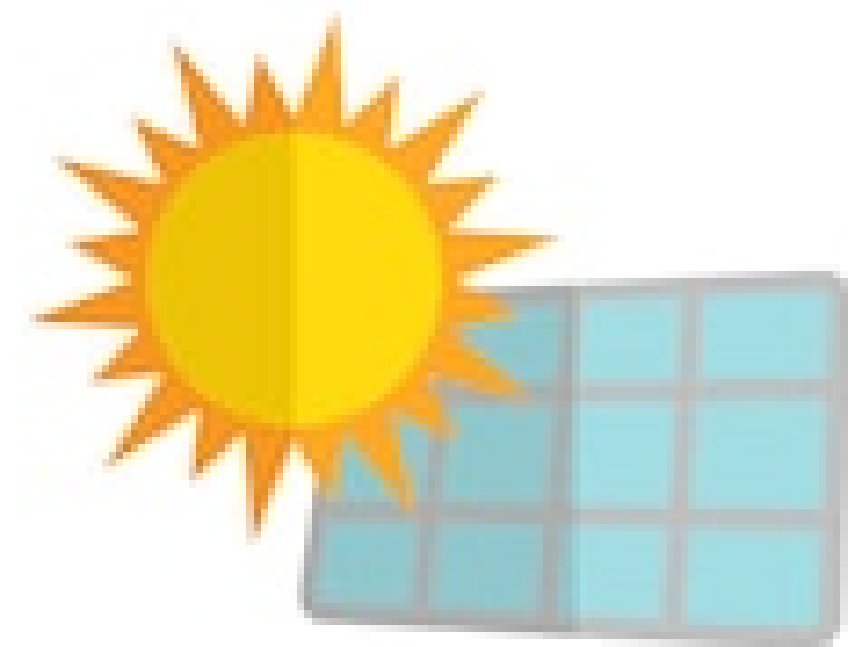
ENVIRONMENT



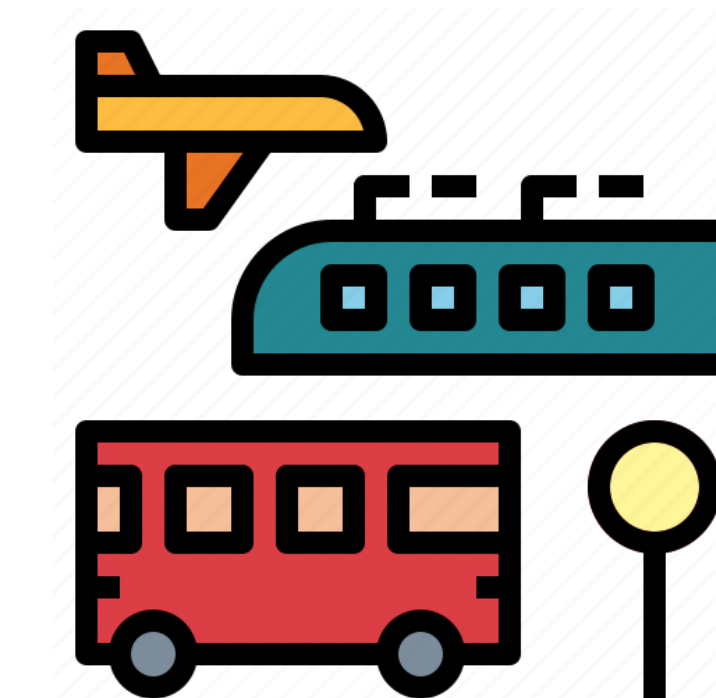
- Vision **Zero CO2** for 2030
scope 1 & 2



- **Circular economy** plan
measured by 2028



- **Self consumption**
15% by 2030
30% by 2040



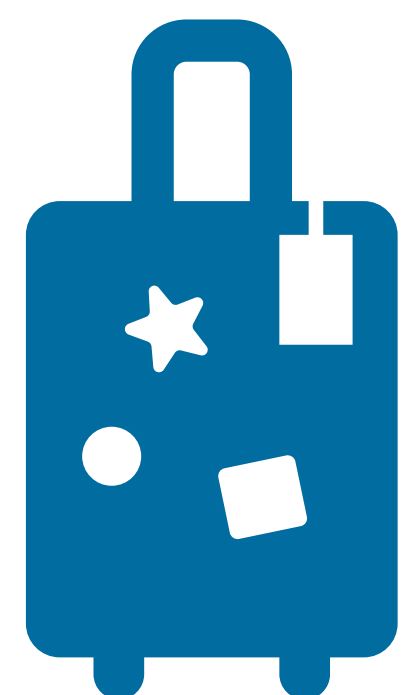
- **Better modal integration**
though MaaS and alliances

SOCIAL



- **Diversity and welfare in talent management**

25% women in workforce by 2030
Promote hiring in vulnerable groups



- **Added value through client service**

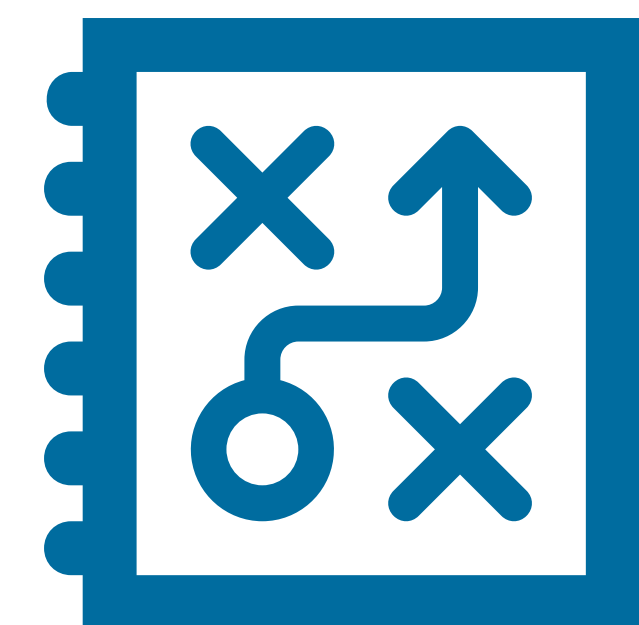
Full accessibility for all passengers
Better comms channels with customers



- **Local development and connectivity**

New jobs and alliances in the territory
Rail-based sustainable tourism products

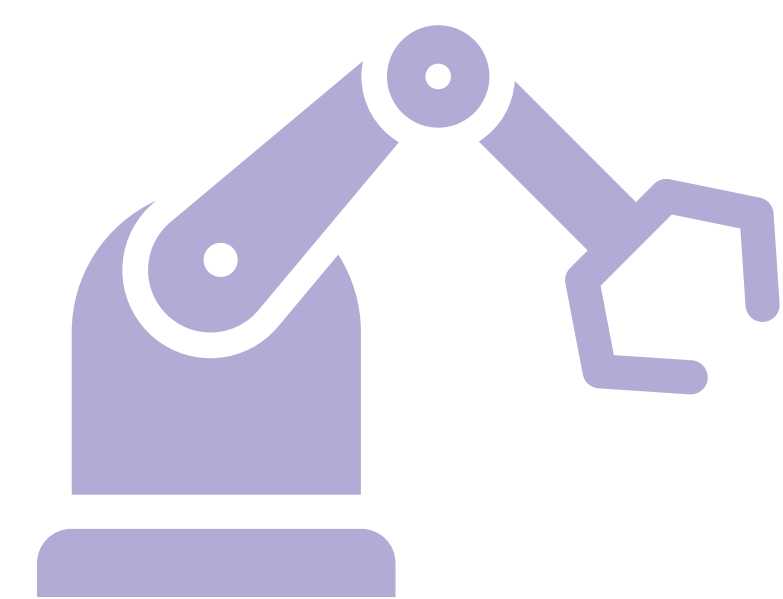
GOVERNANCE



- Integrate **ESG principles** into management and decision making



- **Communicate** ESG topics internally & externally



- **Tech innovation** in digitalization, data management and AI solutions



- Practices aligned with **regulatory compliance**

NEXT STEPS TO KEEP US MOVING



- **Gap analysis** to check compliance with CSRD
- **2025 Sustainability Report** under CSRD
- Updating of our **Global Strategy Plan**
- Reviewing double materiality assessment for **all Renfe Societies**

THANK YOU!
MERCI!
¡GRACIAS!

renfe
Your train.

renfe
Tu tren.

renfe
Votre train.





My organisation is embracing sustainability as part of its business plan

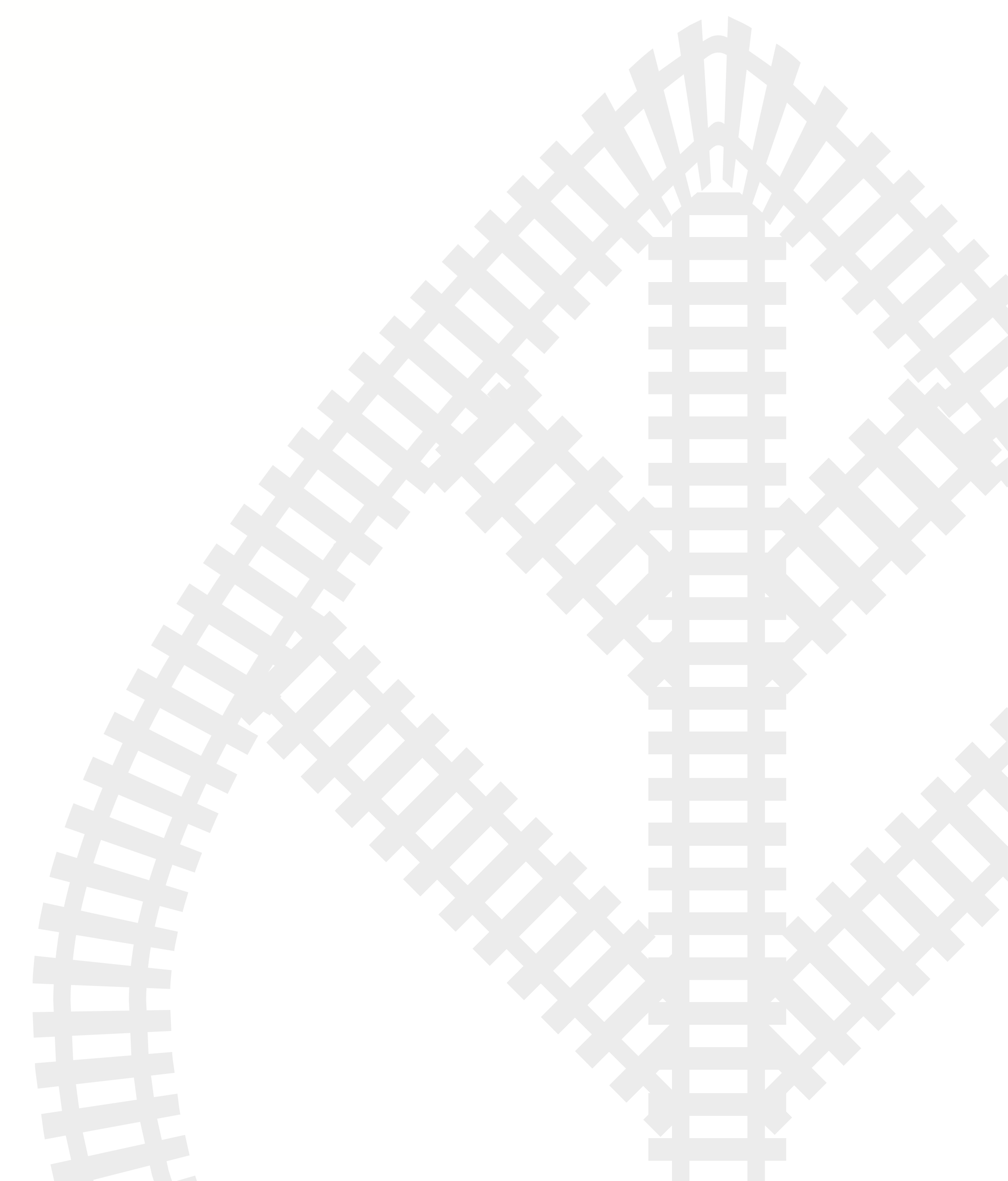
Strongly Agree
 0%

Partially Agree
 0%

Not sure
 0%

Partially Disagree
 0%

Join at
slido.com
#4135 364





Is Sustainability Integrated Into Business Strategy?



Lia Talarico

Head of Sustainability

Trenitalia



Adrián Fernández

Director of Sustainability
and Energy Efficiency

RENFE



**Karoline Bakka
Hjertø**

Chief Sustainability
Officer

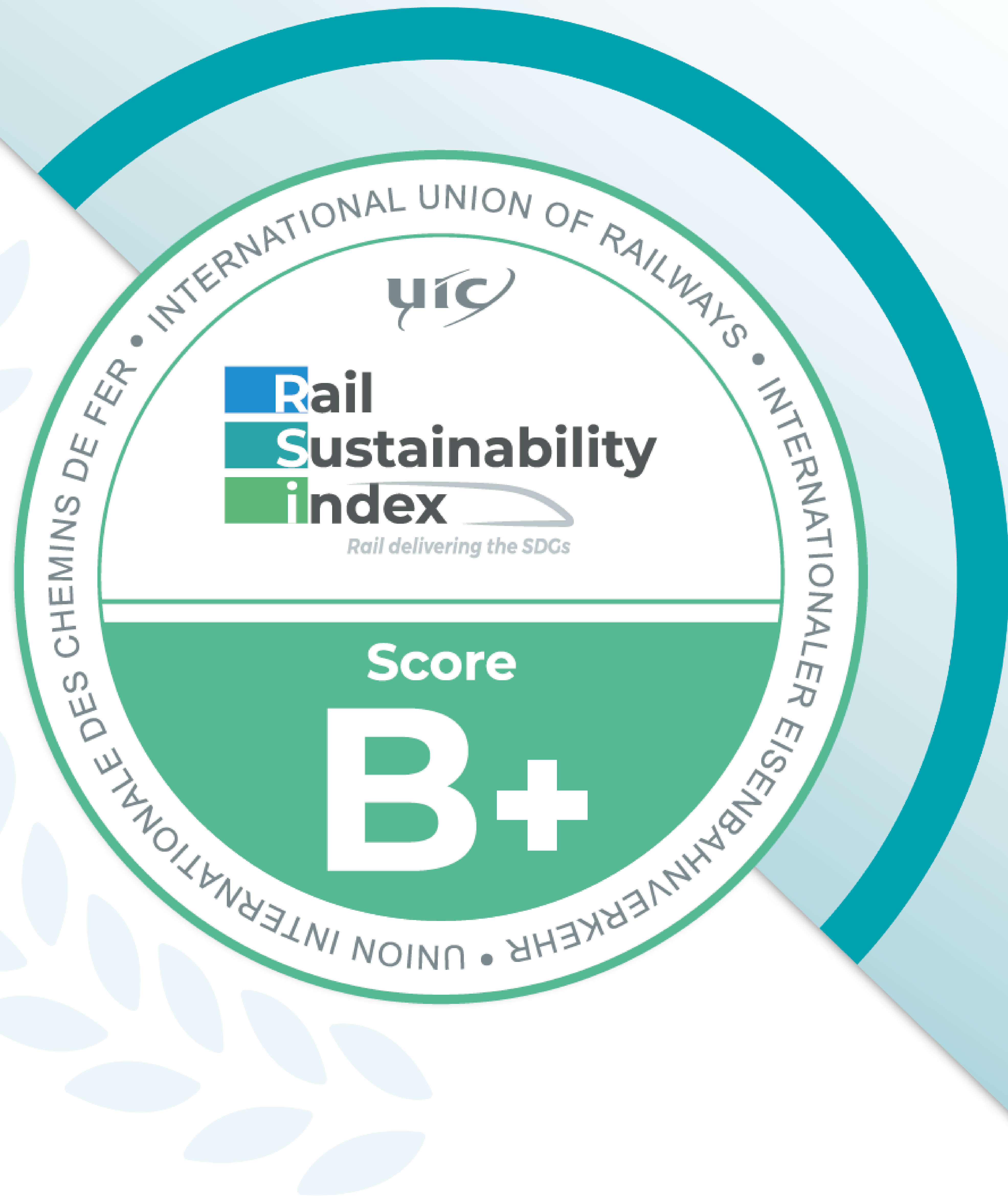
Banenor



Michelle Lister

Sustainability Coordinator

EFE Chile



INTERNATIONAL UNION
OF RAILWAYS

2024

renfe

2021-2023 data submitted in 2024

A decorative graphic of green train tracks curving from the top left towards the center of the slide.

**THANK YOU FOR
JOINING US**

SHARE THOUGHTS ON THE SOCIALS
WITH
#UICSUSTAINABILITYACTIONWEEK

TAG US WITH **@UICRAIL**

A few words from our Gold Sponsor



**Join us in the Atrium for the
Cheese and Wine reception
Hosted by**

