

ALTAMETRIS SUITE

Alexis Meneses
Chief Strategy Officer

May 11th, 2022



TAKE HEIGHT TO DRIVE
RAILWAY PERFORMANCE

ALTAMETRIS



Identity

Founded in

2017

After incubating
5 years

60
employees

Data Scientist, Land Surveyor
Topographer, BIM expert,
railway expert, ...

10 years

Of **expertise** and of
R&D and **innovation**

150

Projects/year

LiDAR, Photogrammetry,
Ballast, Vegetation, Gauge,
Cartography, Thermal, Work
of art, earthworks

4

Sites in France

91%
customer
satisfaction

Key figures on drone

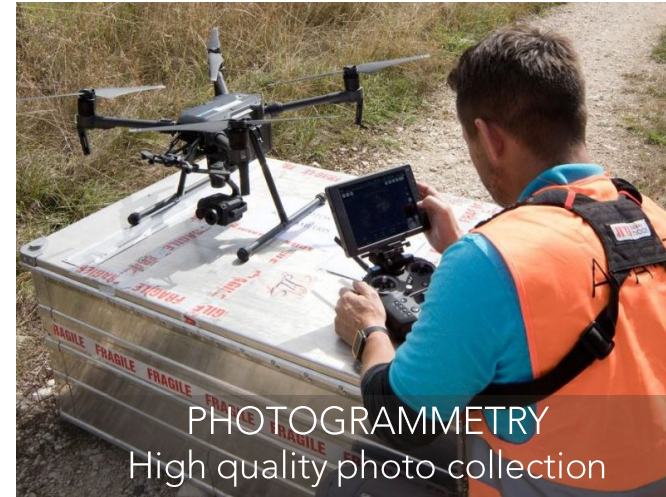
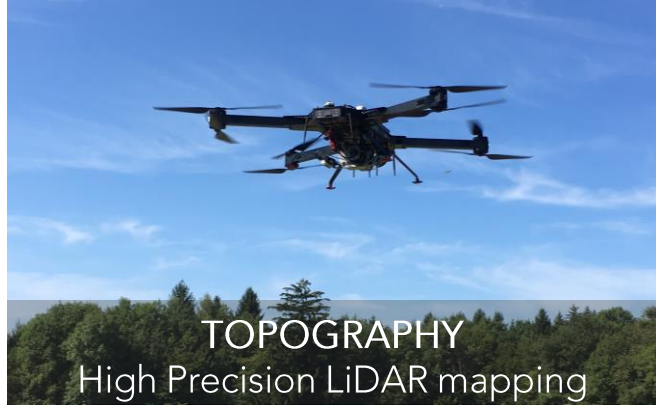
100

Drones in operation
on the railway network

3rd
Industrial
actor

In France after Power
Networks (ENEDIS, RTE)

Different vectors for different uses

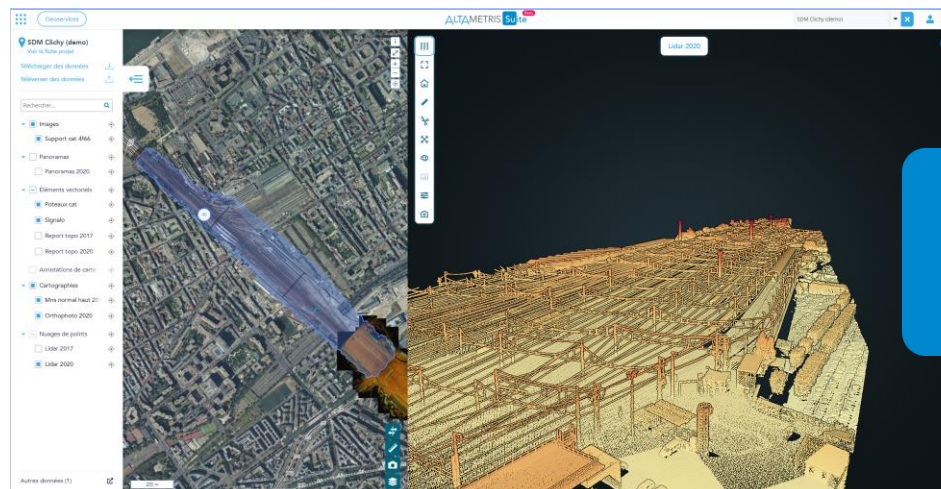


Deployment

- **Ease to access to technology with all-in-one package**
 - Pilot training in railway environment
 - Device leasing with maintenance
 - Administrative delegation
 - Platform to manage flight request
- **Special or complex operations**
 - Expert skills at Altametriss
 - Managed by Altametriss ops



- **Platform to analyse and share data**



Suite

Live Demonstration

TECHNICAL VISIT

May 12th 2022

09:30

Altametriz

21 avenue Stade de France

93210 SAINT DENIS

